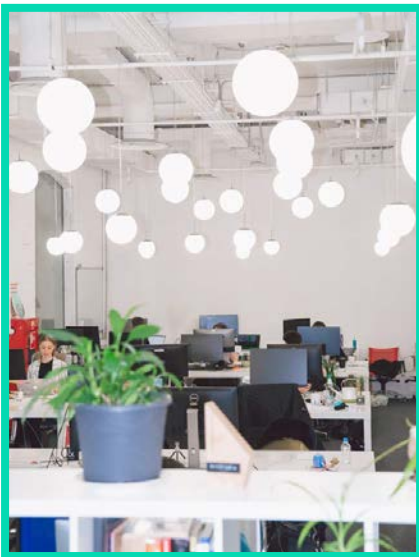


# Allied Employer Group needed a streamlined process. Thankfully they started **onboarding with WorkBright**.

## Case Study: Allied Employer Group

Allied Employer Group is a Professional Employment Organization (PEO) based out of Texas. They have three unique PEOs Allied Employer Group Inc., Allied Workforce, Inc., and Benefits Staffing. Together these three PEOs help businesses in Texas and the southwest with training, onboarding, payroll, benefits, and bookkeeping for organizations.



**"We used a different company, and we didn't have good luck with them."**

**-Emily Miller, Human Resources**

Before WorkBright, Allied Employer Group used another system to handle onboarding. This system had a lot of promises, but it didn't work more often than it worked. So, Allied Employer Group went hunting for a new solution that would **handle all of their onboarding needs reliably**. After searching and demoing multiple companies, they picked WorkBright.



**They needed a new system that was:**

**1**

**Organized For Their  
Clients & PEOS**

**2**

**Easy For Employees  
To Navigate**

**3**

**Multi-Device  
Friendly**

see what happened on **page 2!**



# After Implementing WorkBright

## CREATED

an onboarding system for their company in two weeks.

## BUILT

an easier system to navigate three different PEOs.

## REDUCED

onboarding time to 10-15 minutes per hire.

I would tell other PEOs that WorkBright is a great tool for them to have. You all are highly recommended.



### How WorkBright Met Allied Employer Group Goals in the words of Emily Miller

#### ORGANIZED FOR THEIR CLIENTS AND PEOS

I like the group feature. We have a couple of sister companies. **We can keep them all together**, and we know where they're at, and have all the specific documentation needed for them.

#### EASY FOR EMPLOYEES TO NAVIGATE

It's a lot easier to navigate. When you're going to fill out the forms, you can pull up the actual PDF and **know what you're looking at**. The previous system we used was not as user-friendly.

#### MULTI-DEVICE FRIENDLY

WorkBright was multi-device friendly, computers, tablets, Apple, Samsung, the whole nine yards. **That was huge for us!** We've got a couple of kids that struggled with our previous onboarding system. WorkBright made that process easier.



want to see what workbright can do for you?

visit [www.workbright.com/allied-employer-group](http://www.workbright.com/allied-employer-group) for an inside look  
drop us a line at [info@workbright.com](mailto:info@workbright.com)  
give us a ring: (844) 370-1783

