



charity: water
exhibition

**THE
ART
FAIR**

in partnership with

Presented by
 SAATCHI ART



Introducing the first-ever London-based charity: water exhibition. The specially selected group of artists range from well-known names to emerging talent. Each has taken our iconic yet humble Jerry Can and turned it into a unique piece of art.

Read about the artists, their artwork, and what they have to say about the exhibition here.



scan for online exhibition

1. Jeppe Hein, 'HALF FULL HALF EMPTY'
2. Ben Eine, 'EINE'
3. Láolú Senbenjo, 'OMI, OMI LENIYAN'
4. Steve Gallagher, 'LIFELINE'
5. Day Bowman, 'FULL FLOOD'
6. Maliha Abidi, 'UNTITLED'
7. Caroline Banks, 'CASCADE'
8. Balbinder Broadbent, 'FISH OUT OF WATER'
9. Carina Francioso, 'WATER IS LIFE'
10. Half-Asleep Chris, 'TIME FOR CHANGE'
11. Adah Parris, "'WATER CONNECTS US TO OUR ANCESTORS' DREAMS..." A TALE OF COLONIALISM, CAPITALISM, AND CLIMATE CHANGE'
12. Claire Milner, 'THE SOURCE'
13. Natalie Woo, 'CLEAN WATER CRANKIE'

JEPPE HEIN



JEPPE HEIN PORTRAIT 2022
PHOTOS BY JAN STREMPER PHOTOGRAPHY

Jeppe Hein is a Danish artist based in Berlin, who is widely known for his production of participatory and interactive artworks. Unique in their formal simplicity and notable for their frequent use of humour, his works often feature surprising and captivating elements which place spectators at the centre of events and focus on their experience and perception of the surrounding space. Along with his captivating exhibition pieces, he has a variety of public commissions created to engage communities. These public works often involve water features, benches, and reflective sculptures. You can see his Modified Social Benches on London's Southbank, as well as his Appearing Rooms in the summer months. Hein has been a charity: water supporter for a number of years and his family funded clean water and sanitation facilities for a rural school in eastern Uganda.

'HALF FULL HALF EMPTY'

Dimensions: 50 x 33 x 19 cm

Hein's installation harks to his iconic 'mirror balloon' pieces with a 'floating' 20L charity: water jerry can coated in light blue and silver chrome lacquer, and a dangling light blue ribbon. The artwork hangs from the ceiling above people's heads, creating the illusion that only the roof prevents it from soaring into the air.



Courtesy of the artist
KÖNIG GALERIE, Berlin
303 GALLERY, New York
Galleri Nicolai Wallner, Copenhagen



scan to find online

BEN EINE



Ben Eine is one of the most successful street artists worldwide, and a pioneer in the exploration of graffiti letterforms. He started his career in East London over 30 years ago, partnering with Banksy in the early 2000s. David Cameron famously gifted one of Eine's artworks to Barack Obama in 2010, and in 2018 Eine launched his own clothing brand and created the largest street artwork in the world, visible from space.

'EINE'

Dimensions: 19 x 33 x 48 cm

Eine has spray painted the charity: water Jerry Can in signature bold blue, yellow, red, and black. His name is stencilled onto the can in orange. The artwork is compressed and stored in a vacuum-sealed bag which Eine has written his signature on in bold black lettering.



scan to find online

LÁOLÚ SENBANJO



Láolú Senbanjo is a Brooklyn based visual and performance artist and activist. Born in Nigeria, his art is inspired by his heritage, and he considers all things his canvas. Láolú's unique technique, coined as 'the Sacred art of the Ori', is based on the Yoruba religious practice of becoming one with yourself or awakening the God in you. Láolú has produced endless notable collaborations, including with Alicia Keys, Lupita Nyong'o, and Beyoncé, whose visual album 'Lemonade' featured his work.

"The Jerry Can, a ubiquitous container in my childhood, holds deep sentimental value for me. It symbolizes the hardships my family and I faced in obtaining something as basic as water. It represents resilience, resourcefulness, and the strength of community bonds. Now, being able to repurpose this very jerrican as a canvas for artistic expression evokes strong emotions within me."

'OMI, OMI LENIYAN'

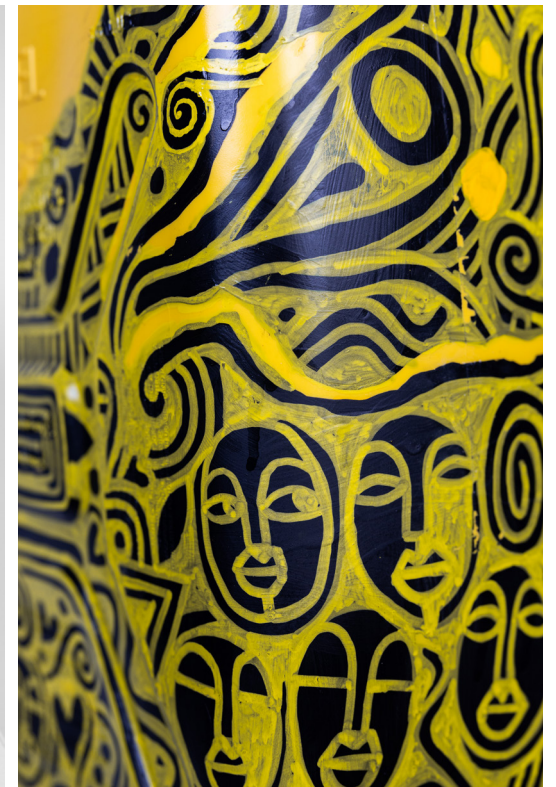
Dimensions: 19 x 33 x 48 cm

'Omi, Omi Leniyan' explores the fluidity and interconnectedness of humanity with water. The artwork conveys the idea that water is not only a physical element but also symbolic of human existence. The wave pattern and faces symbolise the constant ebb and flow of life. The title incorporates the Yoruba language, adding cultural depth to the artwork. It invites viewers to reflect on the profound connection between humans and water, highlighting the significance of water in various aspects of life, such as



sustenance, purification, and spiritual symbolism.

scan to find online



STEVE GALLAGHER



Steve Gallagher is a US-born and Sussex-based art photographer specialising in intricate floral studies and stunning seascapes, with expertise in fashion and digital design. The coastal surroundings of his home have heavily inspired his nature-focused work. His skillfully composed fine art photography includes beautifully detailed studies in both colour and black and white and dramatic compositions of sea and sky.

"I was amazed at how large the jerry can was when I received it. Its sheer size and weight forced me to re-evaluate the challenge and impact of using this container to collect water every day. I realised that what I wanted to do was to recreate the jerry can at full size, so that I could convey its mass and scale to the viewer in a new way. By deconstructing the can and then rebuilding it in glass, I hope that the viewer is able to take a clearer look at the challenges facing those without access to clean water around the world. I also hope that it will inspire them to learn more about the world's water crisis and the vital work of charity: water."

'LIFELINE'

Dimensions: 34 x 47 x 20 cm

Gallagher photographed different angles of the Jerry Can and printed these onto glass sheets that form a box, creating the illusion that the Jerry Can is within. The lid is removable, with the idea that water can be poured inside. While designing this artwork, Gallagher used brown liquid to highlight the contrast between the seemingly pristine exterior of the Jerry Can, and the dirty water often found inside. Gallagher's artwork reminds us of the challenges many people face in obtaining access to clean and safe drinking water, and the need for proper filtration and purification methods to ensure this access. The glass company Gallagher worked with, Southern Counties Glass, were generous enough to donate the materials, printing and build towards the cause.



DAY BOWMAN



Day Bowman is a Dorset-based abstract expressionist. She is considered one of the UK's most exciting contemporary painters, and has won numerous awards for her work. Bowman's multimedia pieces recreate the coastal landscape she grew up in and her canvases echo the shapes she made in the wet, grey sand of her childhood. Her style is characterised by chaotic brushstrokes, explosive ribbons of colour and texture that capture movement and wonder with strength and confidence.

"This artwork is a development of an oil and charcoal painting I created as part of my 'Full Flood' series last year, featured in my collaboration with charity: water. It refers to when the tides are in full flood with rock pools brimming over, and for a brief moment there is a parenthesis 'cut out' of the world of flux."

'FULL FLOOD'

True to form, Bowman has very literally torn up the rulebook to create this unique piece. The artwork is a 3D interpretation of the T-shirt design from her 2022 charity: water collaboration. The pieces of the jerry can are held together with garden wire to create a kinetic effect that resembles the movement of water in certain light. Bowman has used spray paint to capture the vibrant oceanic colours of the piece.



scan to find online

MALIHA ABIDI



Maliha Abidi is a Pakistani-American multidisciplinary artist and author living between London and LA. Her experiences as a South Asian immigrant play a huge role in her work, which focuses on advocating for social justice - including women's rights, girls' education, and mental health. Abidi is also the founder and creator of Women Rise NFT, a community initiative using art to celebrate women around the world. She uses bright and bold colours in illustrations, animations and NFT art to get people interested in issues that impact our societies.

"Clean water is a necessity to human life. By advocating for clean water, we advocate for something basic yet something extremely important, human rights. In so many ways, clean water is at the core of our world and if it is not accessible to millions around the world, we must campaign for it until it is accessible to all- as is the mission of charity: water. I feel proud and grateful to be working with them again and this time to campaign through not only art but creating art on the very object that millions of communities around the world use to gather water for themselves and their loved one - the jerrycan."

'UNTITLED'

Dimensions: 19 x 33 x 48 cm

Maliha Abidi captures 4 portraits of women from around the world to celebrate the strength of women fighting at the forefront of the global water crisis. In communities that lack accessibility to clean water, women and girls are impacted the most since they are responsible for collecting water for themselves and their families. Through this artwork, Abidi celebrates their strength while also amplifying their cause.



scan to find online

CAROLINE BANKS



Caroline Banks is an Anglo-French artist based in London. Her work explores the circularity of energy and memory of gesture, incorporating influences from astronomy, quantum mechanics, music, performance and archaeology. Banks' paintings, installations and body drawings are grounded in observational drawing which develops into abstraction. She works with hand-made brushes and a range of media to continually develop her pieces over periods of time.

"My first impression when unpacking the jerry can was how heavy it was, even empty. Water itself is heavy so I imagined having to carry something weighing tens of kilos on my head over several kilometres. I'm not sure how I'd manage. My experience of carrying water when I first lived in India was about 20 litres, 10 in each bottle and that would take me ages as I had to stop every 100 metres or so to rest. I wanted my painting to convey lightness and movement in contrast to the sturdiness of the object. The silver spout and the gloss spatters catch the light, much as water does in motion."

'CASCADE'

Dimensions: 19 x 33 x 48 cm

Caroline Banks chose to preserve the functionality of the Jerry Can to highlight the importance of this container in daily life. With each brushstroke deliberate and considered, she has used layers of paint to build up the complexity and depth of movement while retaining the memory of what has come before.



scan to find online

BAL BROADBENT



Balbinder Broadbent is a Harrogate based painter and printmaker. Her paintings are abstract and rich in layers of colour, often capturing her fascination with the metamorphosis of shape and intersecting forms. Metaphorical 'windows' are a recurring motif in her distinctive work, and through painting she aims to record impulse and gesture, with a shift in focus from the objective to the subjective.

"Working on the Jerry can initially proved very difficult because of the nature of the plastic surface, despite sanding and sealing with gesso. Throughout the process I kept the 20 litre can full of water. It was cumbersome and difficult to move around my studio. By doing this it kept me fully aware of how exhausting it must be to physically walk miles with all that extra weight. No easy task. I remember my mother telling me a long time ago the story of her maternal aunt in Punjab who had young children, they were tasked daily with walking miles to a well to retrieve clean water and bring it back home, up a steep hill. Clean water is a basic need and yet a luxury if you don't have to worry about access to it."

'FISH OUT OF WATER'

Dimensions: 19 x 33 x 48 cm

Balbinder Broadbent has used mixed media to cover her Jerry Can with vibrant and beautiful marine life. The piece is a nod to the devastating and continuing pollution of our waters, with many ecosystems at the point of no return. Climate change is a significant contributor to the global water crisis, and we are reminded with this artwork that it affects both people and wildlife. Broadbent's work encourages us to reflect on the beauty of life that flourishes with clean water, and the variety of possibilities created by this vital resource.



scan to find online

CARINA FRANCIOSO



Carina Francioso is a Canadian fine artist who has achieved international recognition for her contemporary realist oil paintings. Having spent her adolescence boating or by the sea, Francioso's work captures the beauty, power, and fragility of water, as well as her deep connection to it. Her pieces can be found in private and corporate collections globally, with her reflected passion for life resonating with many celebrity collectors.

"charity: water and their mission have been close to my heart since the very beginning. Through my artwork I have a vision to bring awareness to the vulnerability, protection, and preservation of our world's waters. charity: water's vision seeks to end the world water crisis by bringing clean and safe water to people around the globe. The inspiration for this piece is born from a merging of these two visions."

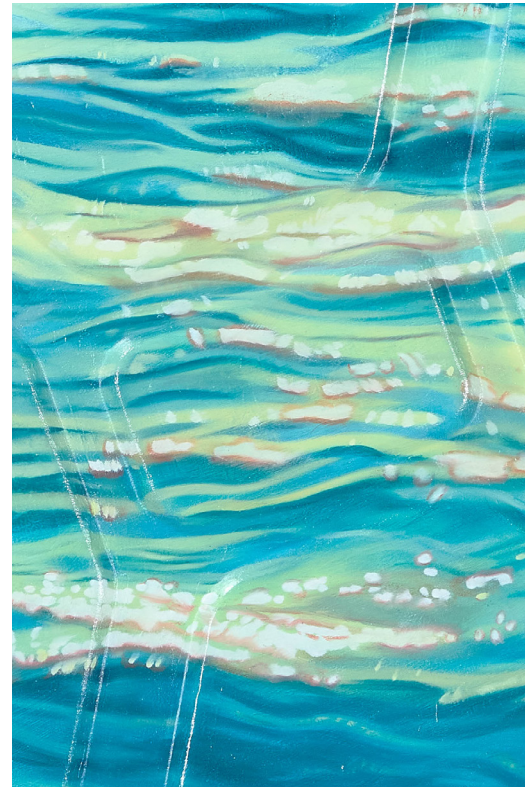
'WATER IS LIFE'

Dimensions: 77 x 69 x 5 cm

Carina Francioso has painted a beautiful, vibrant water scene on the front of her Jerry Can to bring light to the importance of this natural resource. The countries in the background are where charity: water has funded water projects (currently 29 countries in Africa and Asia). The gold leaf over the countries symbolises charity: water's impact and the richness of these communities, encompassing their inspiring stories of perseverance. Francioso has used resin to represent clean water, and mounted the Jerry Can over the top. This artwork serves as an emblem of hope, to end the world water crisis by bringing clean water to all those in need.



scan to find online



HALF-ASLEEP CHRIS



Chris Burton, better known online as Half-Asleep Chris, is an English YouTuber known for his stop-motion videos and vlogs about Lego, culture, and building his cats' crazy contraptions. Chris and his subscribers raised an incredible £49,000 for charity: water last year.

"There are coins from over 100 countries, showing just how generous and how global the response was with the fundraising campaign last year - I've always loved coins, and it seemed the perfect way to represent everyone who donated and the difference they made."

'TIME FOR CHANGE'

Dimensions: 20 x 34 x 49 cm

Chris has used his jerry can as a base for a coin mosaic, combining currencies from over 100 different countries. While he estimates that the total value of the coins themselves lies somewhere around £100, what they represent is infinitely more valuable. With the help of his subscribers, Chris has raised enough money to serve around 1,200 people with water projects in Cambodia. The crumbling grout holding the piece together brings to mind the fragility of systems contributing to the global water crisis. More than anything, though, this

artwork represents the power of community.



scan to find online



ADAH PARRIS



Adah Parris is a London-based anti-disciplinary artist, keynote speaker, and activist dedicated to inspiring people to embrace new ways of thinking and doing. Her philosophy, 'Cyborg Shamanism', merges ancient wisdom, living systems, traditional ecological knowledge and practices, and digital technologies. Parris has worked with some of the world's leading organisations and institutions, including Google, The Tate Modern, The British Film Institute, and many more.

"Stepping beyond my comfort zone, I explored working with a new artistic medium, a process which became a form of performance art, exploring limitless potential for change. I chose to collaborate with charity: water because of their commitment to directing 100% of fundraising proceeds to on-the-ground work, fostering transparency and trust—a stark contrast to the policies that have contributed to Africa's desertification, driving the need for charities like charity: water."

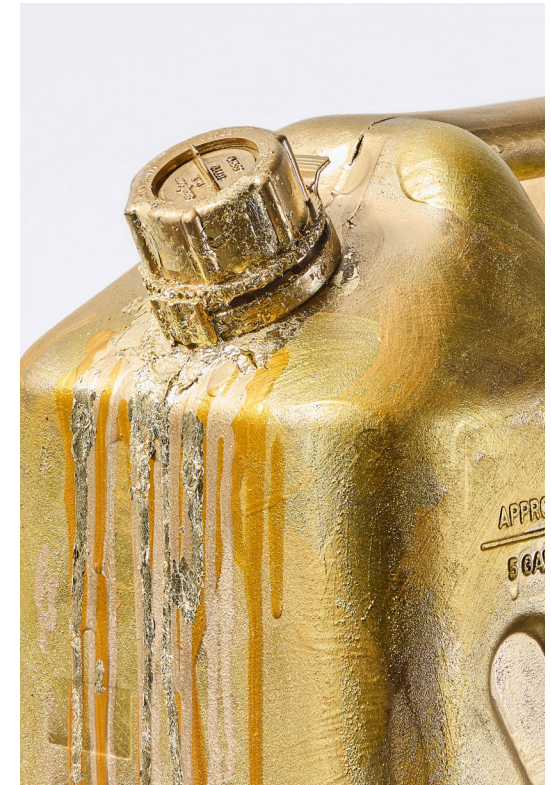
"WATER CONNECTS US TO OUR ANCESTORS' DREAMS..." A TALE OF COLONIALISM, CAPITALISM, AND CLIMATE CHANGE'

Dimensions: 19 x 33 x 48 cm

Embracing Nsibidi, an ancient Nigerian writing system, Adah Parris' artwork narrates the story of Africa's desertification driven by colonialism, capitalism, and climate change. The golden camouflage of the Jerry Can is a symbol of the obscured policies that sanctioned resource exploitation, while honouring the ancestral bond to water within many Global South communities. Parris hopes to remind us of our duty to treasure, protect, and nurture water - the thread connecting our ancestors' aspirations and the essential sustenance for a shared tomorrow.



scan to find online



CLAIRE MILNER



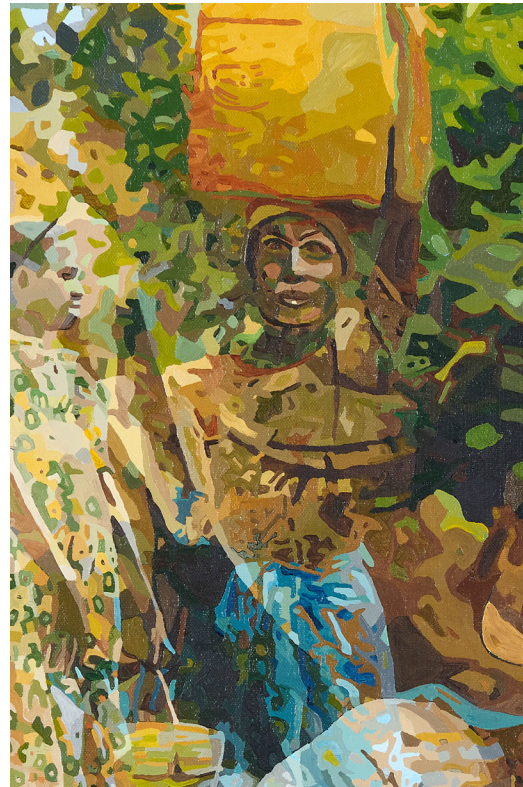
Claire Milner is a British artist based in North Yorkshire. Her artworks are held in a number of notable collections around the world, including Blue Marilyn in the collection of Rihanna. Her work was presented to delegates in the Blue Zone of the COP26 conference to illustrate species extinction and habitat loss. Her work has raised large funds for conservation organisations and in 2023 Milner was selected as one of fewer than ten artists worldwide for Active Membership of the Gallery Climate Coalition, along with several blue-chip galleries, institutions and museums.

"Before I begin work on any project, I research it thoroughly. I was both shocked by the scale of the water crisis and heartened by the crucial work of charity: water in partnership with local experts and communities. I particularly enjoyed reading stories from the field and noticed the Jerry Can appeared again and again - I knew it had to be an intrinsic part of the painting. As I researched, ideas formed and eventually the final composition crystallised in my mind. My paintings are at the intersection of abstraction and figuration and explore concepts surrounding the hidden and the revealed."

'THE SOURCE'

Dimensions: 60 x 60 x 4 cm

Milner's painting reflects three main connections: to Africa, to art history via Ingres' painting depicting a girl holding a pitcher representing a water source, and to 'The Spring', the monthly giving community of charity: water. This artwork, like many of her others, takes inspiration from the deep connection the artist feels towards Africa, having spent time and formed meaningful relationships in different countries across the continent.



scan to find online

NATALIE WOO



Natalie Woo is a California based Asian American artist who primarily works with individuals and organisations who care about culture to create vibrant, visual illustrations that celebrate everyday moments. Many of her pieces involve whimsical scenes captured by bright watercolour paints and mixed media motifs. Woo celebrates diversity in her work, which often centres around food, the natural beauty of flowers and the reverence for heritage.

"I see my role as an artist contributing to positive change through inspiring empathy and understanding through beauty. Art often expresses powerful messages in ways words cannot by connecting with people on an emotional level through the senses. This raises awareness and encourages people to take action. I hope viewers will take away that something as simple as clean water has the ability to create health, independence, education, beauty, hope and joy that is sustained over generations. It opens up endless possibilities that those with clean water may take for granted on a day to day basis."

'CLEAN WATER CRANKIE'

Dimensions: 40 x 20 x 35 cm

Natalie's installation involves the clever transformation of a Jerry Can into a moving panorama, or a 'crankie'. Originating in the 18th century, a crankie was a European storytelling device that rotated long paintings around two large spools to create a scrolling story with a beginning, middle, and end. Natalie's piece is a 2.3 metre, hand painted watercolour depiction of the celebration and story of clean water, framed by the Jerry Can and incorporating pressed flowers.



scan to find online

Thanks for your support



Check out all the works online and
find out more about our work by
scanning the QR code