

NXU, INC.

LD Micro Invitational XIII

JUNE 6, 2023.



ANNIE PRATT | PRESIDENT & DIRECTOR
MARK HANCHETT | FOUNDER, CHAIRMAN & CEO

Disclaimer

This presentation is provided for informational purposes only. Nxu, Inc. ("Nxu") has prepared this presentation to assist interested parties in making their own evaluation in whether to purchase Nxu™ products or to invest in Nxu and for no other purpose. No representations or warranties, express or implied, are given in this presentation. To the fullest extent permitted by law, in no circumstances will Nxu or any of its stockholders, affiliates, representatives, partners, directors, officers, employees, advisers, or agents be responsible or liable for any direct, indirect, or consequential loss or loss of profit resulting from the use of this presentation, its contents, its exhibits, omissions, reliance on the information contained within it, or in opinions communicated in relation to it or otherwise arising in connection with it. Industry and market data used in this presentation have been obtained from third party industry publications and sources as well as from research reports prepared for other purposes. Nxu has not independently verified the data obtained from these sources and cannot assure the accuracy or completeness of the data. This data is subject to change and revision based upon changes in circumstances and changes in readily available inputs. Additionally, this presentation does not purport to be all inclusive or to contain all the information that may be required to make a full analysis of Nxu or its investment prospects. Viewers of this presentation should each make their own evaluation and such other investigations as they deem necessary to fully and accurately evaluate Nxu and whether Nxu would be a suitable investment for you.

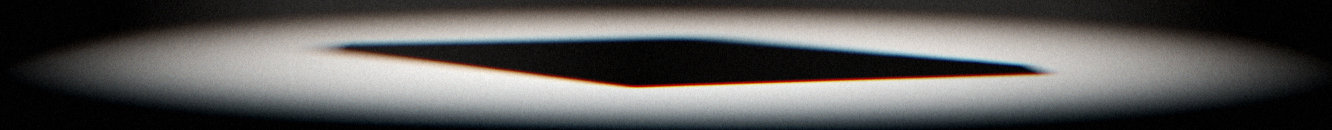
FORWARD LOOKING STATEMENTS.

The information in this presentation includes "forward-looking statements" within the meaning of Section 27A of the Securities Act, and Section 21E of the Exchange Act. All statements, other than statements of present or historical fact included in this presentation, regarding Nxu and its strategy, future operations, financial position, estimated revenues, and losses, projected costs, prospects, plans and objectives of management are forward-looking statements. When used in this presentation, including any oral statements made in connection therewith, the words "could," "should," "will," "may," "believe," "anticipate," "intend," "estimate," "expect," "project," the negative of such terms and other similar expressions are intended to identify forward-looking statements, although not all forward-looking statements contain such identifying words. These forward-looking statements are based on management's current expectations and assumptions about future events and are based on currently available information as to the outcome and timing of future events. Except as otherwise required by applicable law, Nxu disclaims any duty to update any forward-looking statements, all of which are expressly qualified by the statements in this section, to reflect events or circumstances after the date of this presentation. Nxu cautions you that these forward-looking statements are subject to all of the risks and uncertainties, most of which are difficult to predict and many of which are beyond the control of Nxu. For a more detailed explanation of Nxu risk factors, please refer to the Company's most recently filed annual report on Form 10-K, quarterly reports, and registration statements filed with the SEC.

TRADEMARKS.

This presentation contains trademarks, service marks, trade names, copyrights, patented information, and other intellectual property owned by Nxu, which is the sole property of Nxu™.

**Our vision is to enable a future where energy is abundant
and easily accessible so that electric mobility is viable
across all market segments.**



Overview

WE ARE NXU™

What We Do

We design and domestically manufacture battery cells and packs, megawatt charging stations, and residential / commercial energy storage systems.

Market Focus

Today

Energy & Infrastructure

Tomorrow

Mobility

Target Industries

Commercial & Residential Energy Storage	Railway Transportation
Automotive OEMs	eVTOL & Aviation
Mining & Construction	Marine & Maritime

ADDITIONAL INFORMATION ⁽⁰¹⁾

NXU, Inc.	
FOUNDED	2016
TICKER	NXU
EXCHANGE	Nasdaq
LISTING DATE	9.27.2022
COMPANY SIZE	144
PATENTS (INCLUDING PENDING)	38
HEADQUARTERS	Mesa, AZ

Leadership

Mark Hanchett

FOUNDER / CEO / BOARD CHAIRMAN



Apoorv Dwivedi

CHIEF FINANCIAL OFFICER



Benoit Le Bourgeois

VP OF USER EXPERIENCE



Srinivas Jasthi

VP OF SOFTWARE



Britt Ide

INDEPENDENT BOARD DIRECTOR



Annie Pratt

PRESIDENT / BOARD DIRECTOR



Jordan Christensen

CHIEF LEGAL OFFICER



Kate Sieker

VP OF PEOPLE



Sarah Wyant

VP OF FINANCE



Caryn Nightengale

INDEPENDENT BOARD DIRECTOR



Total Addressable Market

EV BATTERY

\$225 billion
by 2030⁽⁰²⁾








EV CHARGING

\$182 billion
by 2030⁽⁰³⁾

BATTERY ENERGY STORAGE

\$394 billion
by 2030⁽⁰⁴⁾

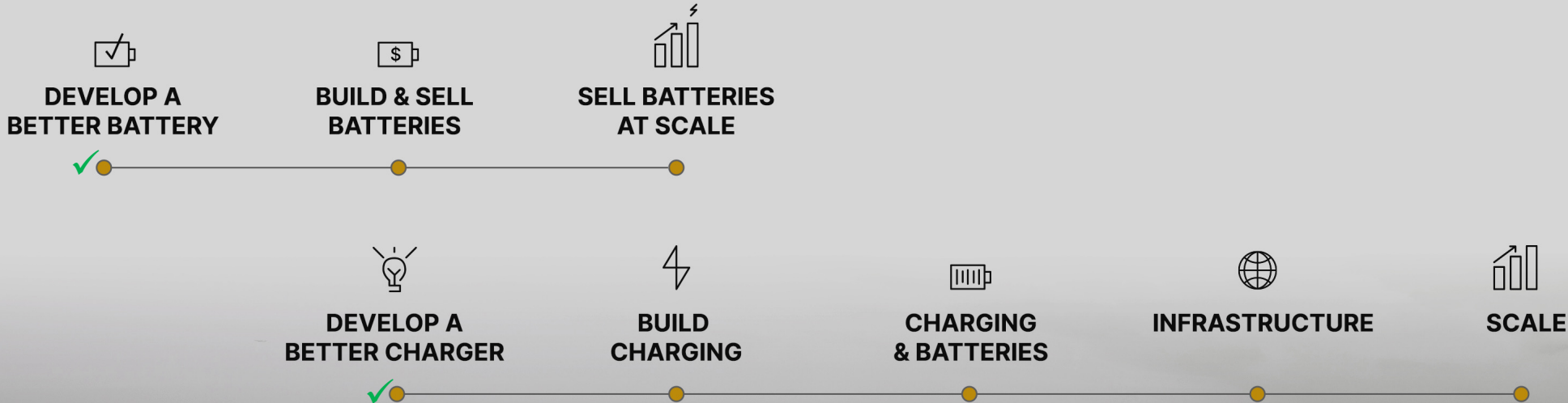
Nxu™ Solutions

CRITICAL NEED	CURRENT AVAILABILITY	IMPORTANCE	
➤ Battery Capacity & Range		HIGH	
➤ Charging Infrastructure		HIGH	
➤ Energy Storage		HIGH	

Designed to address shortcomings in existing EV infrastructure and remove critical barriers to adoption in commercial and industrial markets.

 Inadequate  Needs Improvement

Our Strategy



Energy

Mobility

✓ Milestone achieved



Milestone Driven GTM Strategy

GENERATES REVENUE AT EVERY STEP | DE-RISKS STEPS AND ADDS INCREMENTAL VALUE AT EVERY MILESTONE

Crawl – Launch Energy Products

- First Cell & Pack Deliveries
- Pilot Production in Process
- Ready for Mass Production
- Launch Megawatt+ Charging Station
- Market Subscription-based energy-as-a-service

Walk – Scale Battery Cell & Pack Production

- Targeting 1 MWh per day energy capability
- Expand Megawatt+ Charger footprint
- Deploy initial BESS solutions
- Targeting 4.5MW power capability

Run – Deploy Energy Infrastructure Solutions

- Gigafactory-level production
- Continue build-out of Megawatt+ charging network
- Scale energy storage-as-a-service
- Maintenance & services
- Data collection, analytics & client decision support
- Connected and integrated software to manage solutions
- Over The Air (OTA) Updates & Cloud Services

Leap – Expansion of the NXU Ecosystem

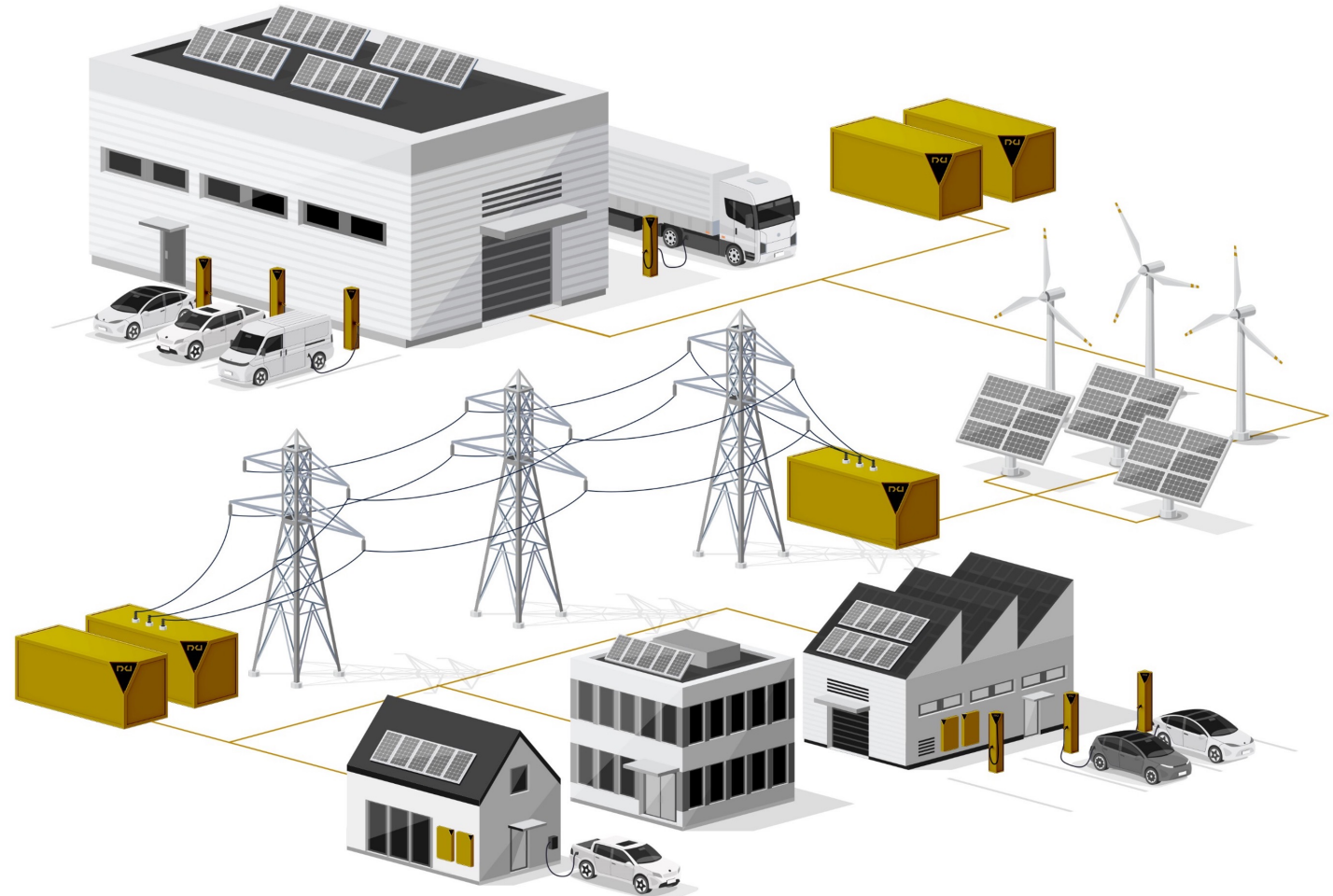
Our Ecosystem

Nxu™ Energy Storage + Megawatt+ Charging Infrastructure

AUGMENT THE GRID

STORAGE FOR RENEWABLE ENERGY SOURCES

SUSTAINABLE BACK-UP POWER ON-DEMAND



Our Ecosystem

VERTICALLY INTEGRATED



 cell™

 ube™

1.5+ MEGAWATT
CHARGING

FOUNDATIONAL TO ENERGY STORAGE

Energy Storage Solutions

MODULAR & SCALABLE

Nxu™ QCell Technology

- MADE IN ARIZONA
- NMC811 CHEMISTRY
- 9-MIN CHARGE TIME IN DEVELOPMENT
- YIELDS UP TO 20% MORE PACK DENSITY



Qcell™



Qube™
90 QCells™

Nxu™ Qube Battery Pack

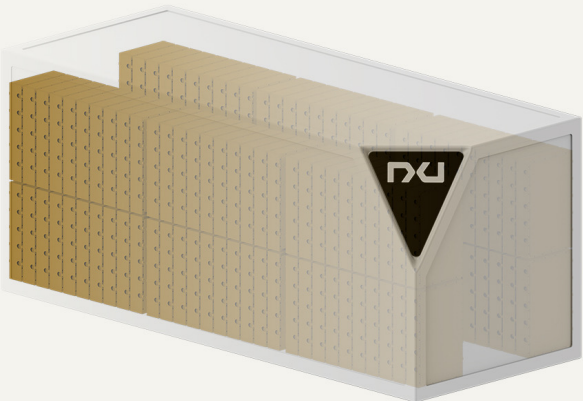
- 30 KWH BATTERY PACK
- HIGH ENERGY DENSITY
- BEST-IN-CLASS THERMAL MANAGEMENT



Qube+™
1 Qube™
BESS

Nxu™ Qube+ Energy Storage

- COMMERCIAL ENERGY STORAGE SYSTEM
- SUBSCRIPTION-BASED ENERGY-AS-A-SERVICE



Qube+™
120 Qubes™
BESS

QCell

NXU™ FOUNDATION | DIFFERENTIATED & HIGH PERFORMING

Optimal Design

HIGHEST MECHANICAL ENERGY DENSITY

Up to 8x Lower

HEAT TRANSFER

As Low As 2C

LOWER TEMP DELTA

BMS • BUS • Thermal

FEWER PARTS



MADE IN ARIZONA

Qube

BATTERY PACK

306V

DISCHARGE LIMIT

30 kWh

USABLE CAPACITY

15-Minute

REPEATABLE CHARGING

Reduced Complexity

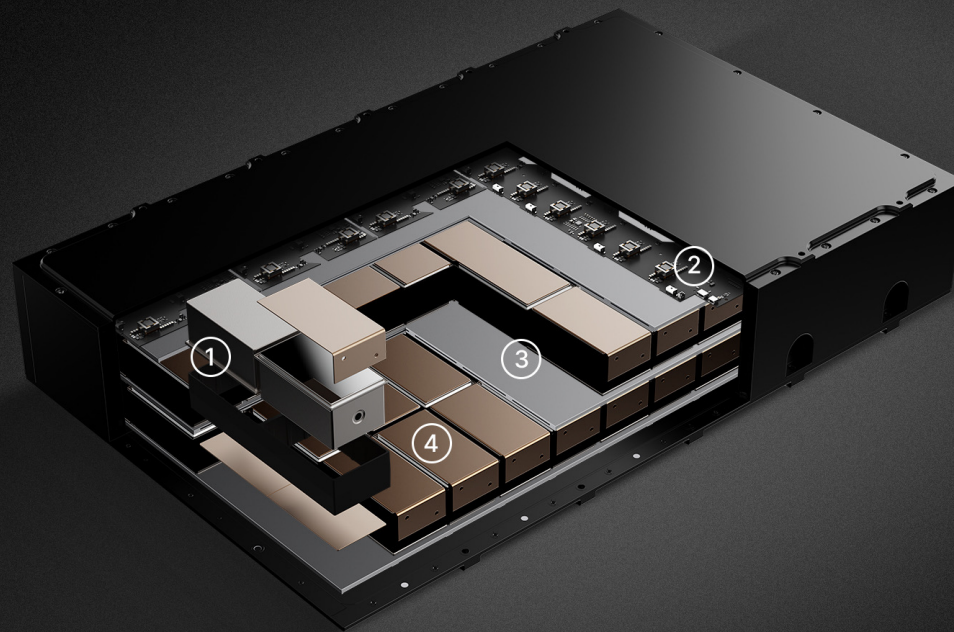
NO EXTERNAL PUMPS, RADIATORS, HOSES, VALVES



(05)

Qube

BATTERY PACK



PACK STRUCTURE

9)

1. QCell: Energy dense powerhouse of the pack.
2. Active BMS: Controls cycle life, heals cells, and leveraged excess heat to support charging or conditioning.
3. Active Thermal Management: Decreases charge time while increasing reliability.
4. Cell-to-Pack (CTP) Assembly: Designed as one module, CTP optimizes Wh/kg through direct cell integration.

Megawatt+ Charger

BACKWARDS COMPATIBLE & FUTURE PROOF



Megawatt+

ADVANCED CHARGING

World's First
DEMONSTRATED MW+ CHARGING

Universal Design
NO SPECIFIC PROTOCOLS

The only dual tech solution supporting
DC up to 1.5MW and AC up to 50kW
3-phase charging



Qube+

ENERGY STORAGE BEYOND VEHICLES & EQUIPMENT

BESS

RESIDENTIAL APPLICATION

BESS

COMMERCIAL APPLICATION

Micro-Grid

OFF-GRID ENERGY STORAGE

Consistent energy storage solution
leveraging sustainable power to
decrease the effects or risks of outages

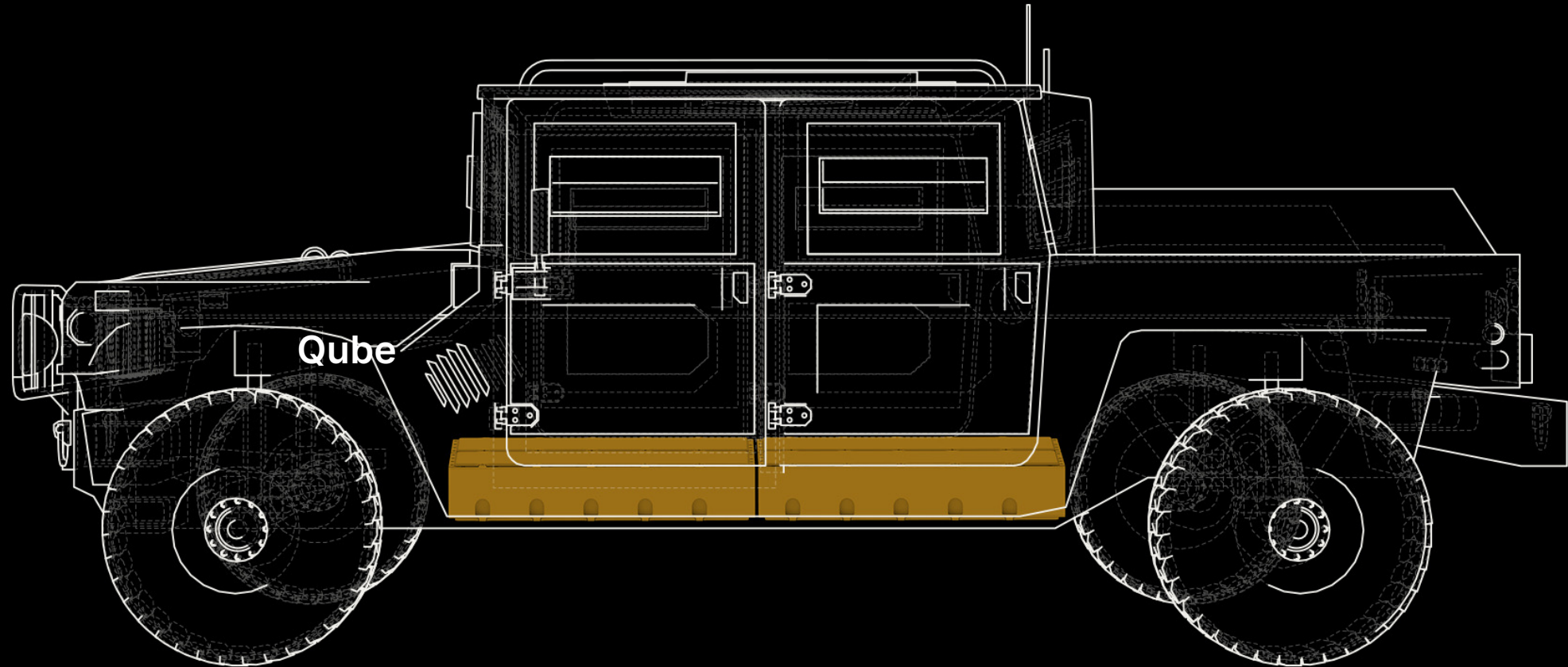
QUBE+



(10)

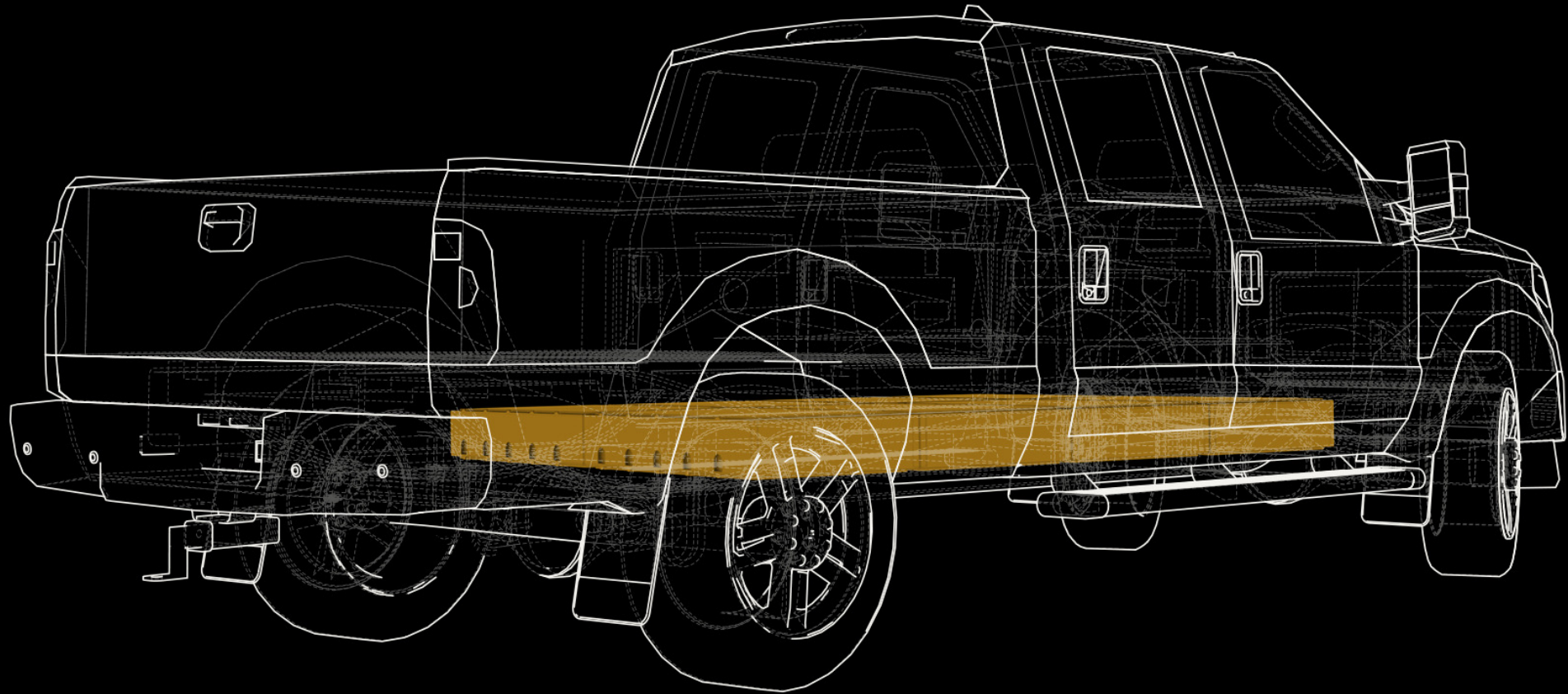
Qube

APPLICATION



Qube

APPLICATION



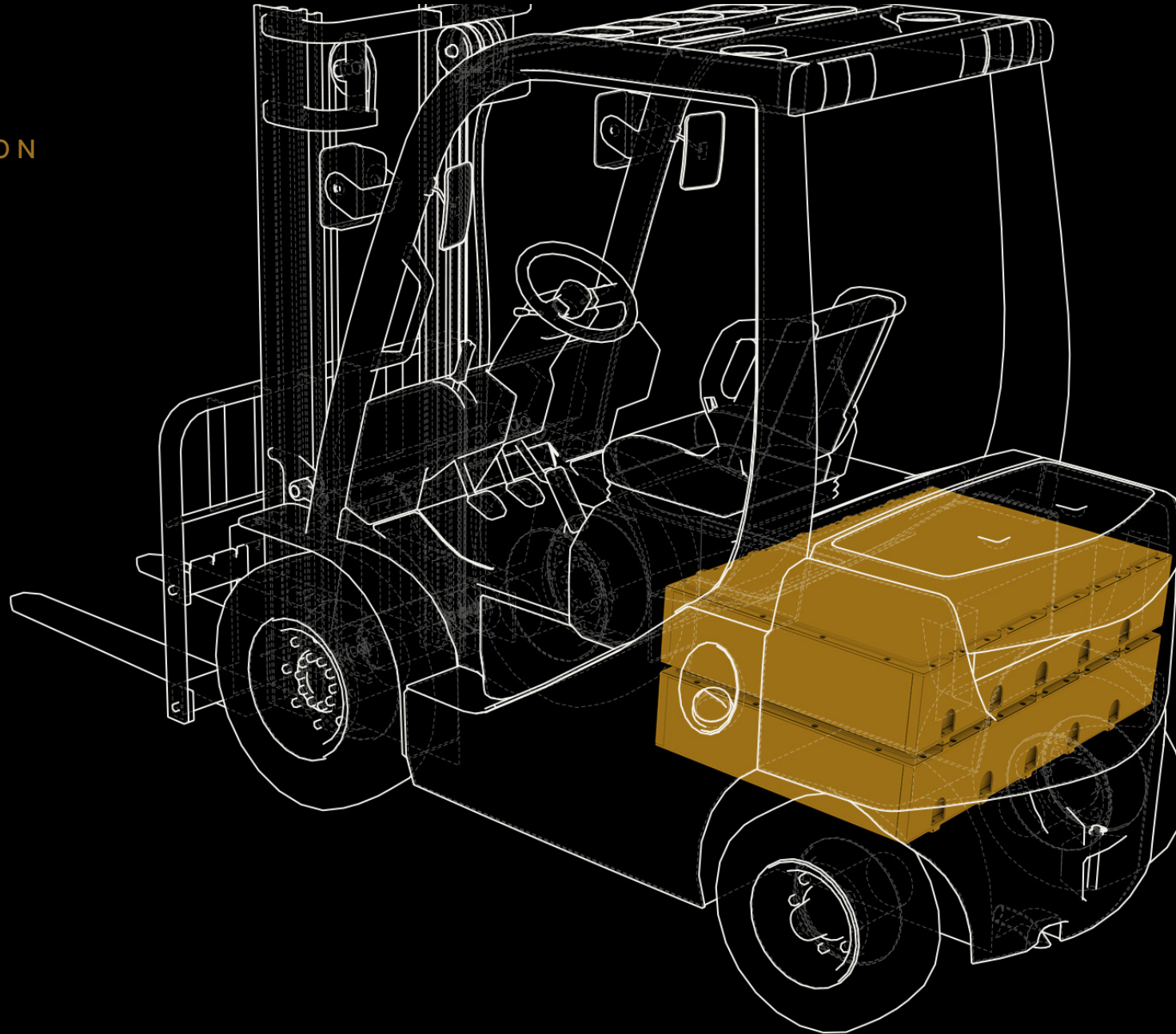
Qube

APPLICATION



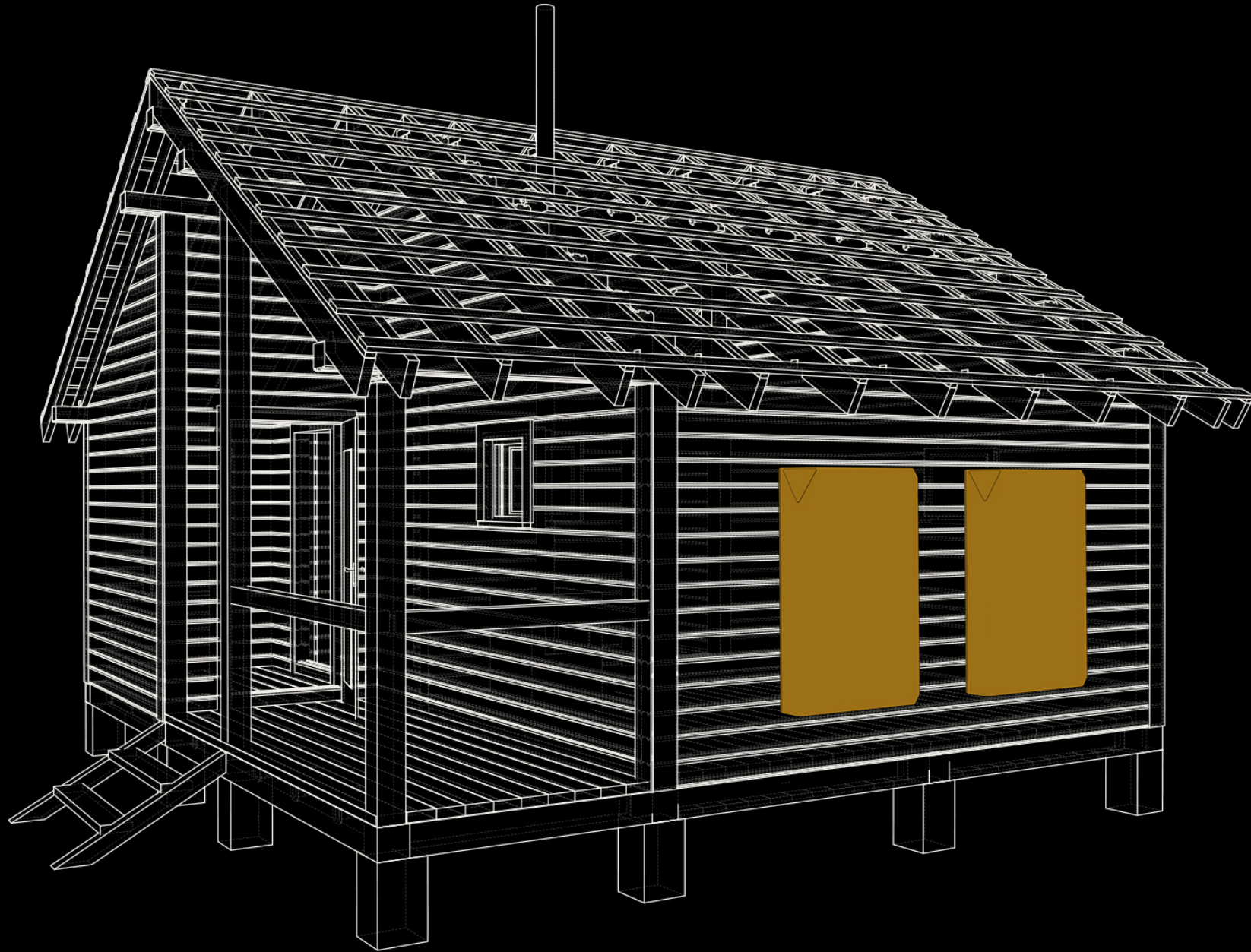
Qube

APPLICATION



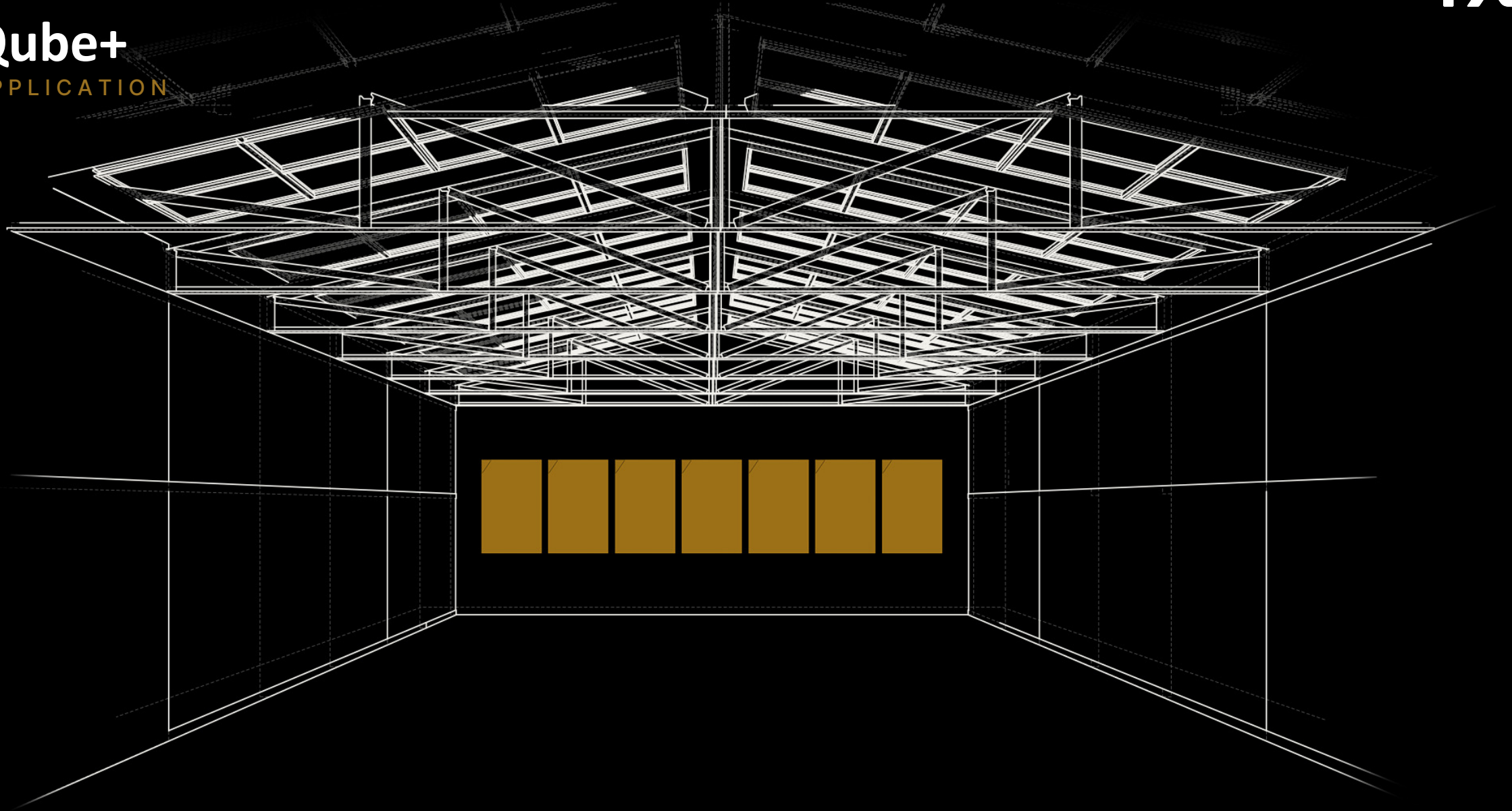
Qube+

APPLICATION



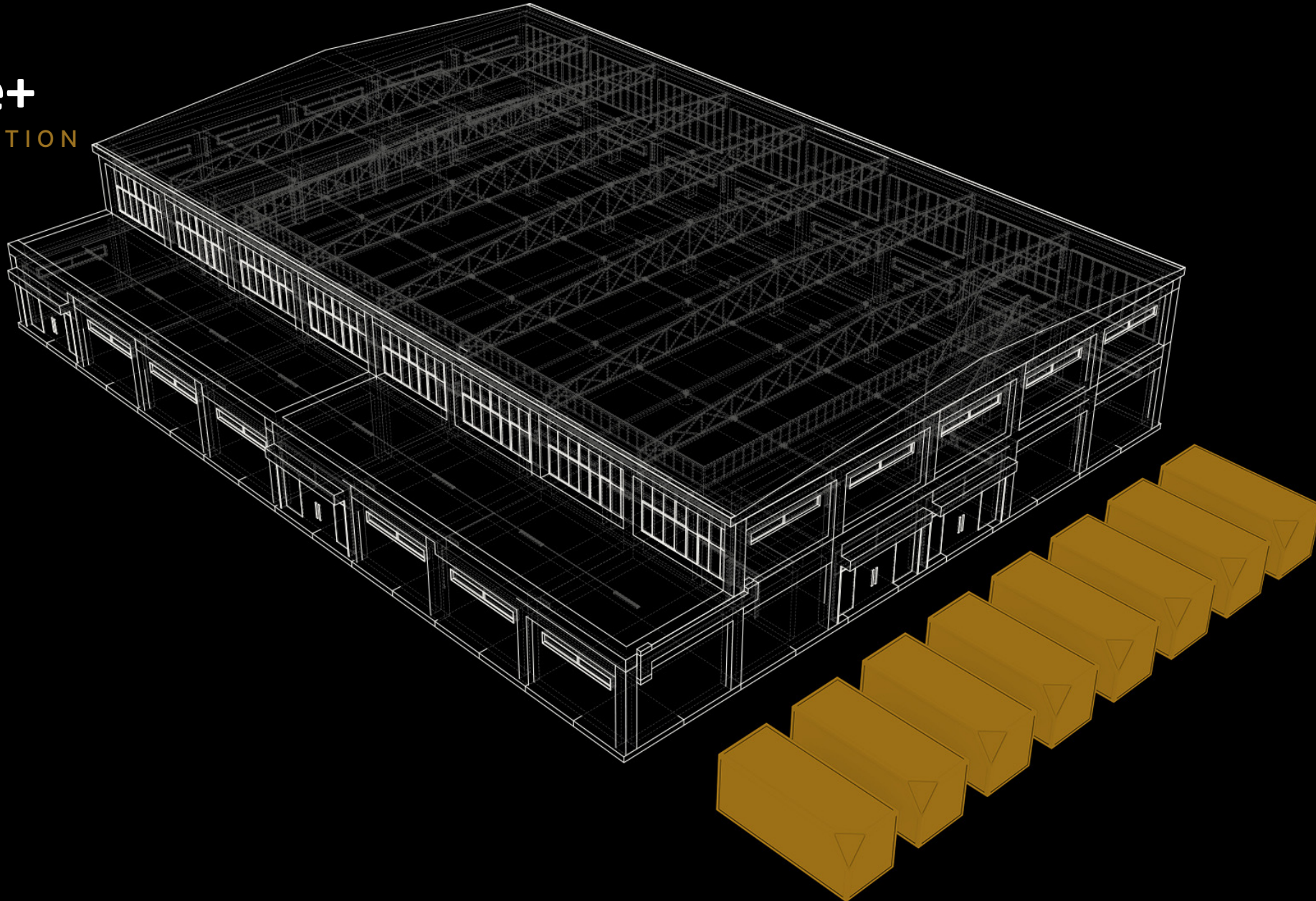
Qube+

APPLICATION



Qube+

APPLICATION



Thank You!



FACEBOOK
@NxuInc



YOUTUBE
@NxuInc



TWITTER
@NxuInc



INSTAGRAM
@brand_nxu



Appendix

- 01 Information represented as of June 1, 2023.
- 02 Polaris Market Research
- 03 Acumen Research & Consulting
- 04 Acumen Research & Consulting
- 05 Nxu™ QCell & Qube are in the Design Verification & Test (DVT) Phase.
- 06 Nxu™ QCell is currently in Production Verification & Test (PVT) Phase.
- 07 Nxu™ Megawatt+ Charger currently in Design Verification & Test (DVT) Phase.
- 08 Nxu™ Megawatt+ Charger portable prototype.
- 09 Nxu™ Megawatt+ Charger handle prototype.
- 10 Nxu™ Qube+ portable prototype.