



L&T Switchgear*
Business

IS NOW



Electrical & Automation



INFRASTRUCTURE



INDUSTRIES



BUILDINGS



AGRICULTURE



HOME



Maximum Retail Prices
for Final Distribution Products
Effective from 01-05-2024

EXORA

*Under license from Larsen & Toubro Limited. | #Trademark of Schneider Electric Denmark A/S.

FROM THE COO'S DESK.



L&T Switchgear* IS NOW
Business



Electrical & Automation

Dear Stakeholder,

We are pleased to announce the launch of our new brand "Lauritz Knudsen Electrical & Automation" on 29th May 2024 which will replace the existing brand, L&T Switchgear.

We sincerely thank you for your patronage & support over the last seven decades. We eagerly anticipate continuing this journey under the new name.

During this transition, the specific product names shall remain unchanged, such as ACBs - OMEGA & C-POWER, MCCB-DSine, Final Distribution Products (MCBs, RCCB, RCBO) – AU / Exora, Contactors -MNX/MO/MCX, Drives, PLCs, Metering products etc. Our products now feature a refreshed look that reflects our brand image and brings more consistency across our product line. However, please note that this change will not affect the ordering CAT numbers, technical parameters, and dimensions of our product range. Once the old brand material is exhausted, we will exclusively supply products under our new brand identity.

We assure you that this brand transition will be seamless, ensuring continuous availability of the products, including spares and after-sales support throughout the product's life cycle, whether under the L&T Switchgear or Lauritz Knudsen brand. Product warranties, as per our standard terms, will be honoured for products in both brands.

We kindly request you to update our new brand, Lauritz Knudsen Electrical & Automation, in your list of approved makes.

Thank you for your continued support and cooperation.

Best regards,

Naresh Kumar,

COO & Sr, VP, Electrical Standard Products

Lauritz Knudsen Electrical & Automation



L&T Electrical & Automation (E&A) Final Distribution Products

E&A's range of modular devices offer MCB, RCCB, Isolator & DB for final distribution of electrical power. E&A's products are better known for reliability, functionality & ease of use.



E&A Final Distribution Products spell world class

E&A products conform to relevant global standards viz. IEC, EN. They also have BIS, C€ marking, CB and KEMA certification.

Contents

MCB - Miniature Circuit Breaker	2
Isolators	6
RCCB - Residual Current Circuit Breaker	7
Other Protection & Control Devices	8
Distribution Boards	10
Industrial Plugs & Sockets	16



Note:

[Grey colour : HSN code]

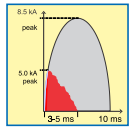
Current GST 18%, subject to changes as per Govt. notification





Safety re-defined

Finger proof terminals eliminate chances of accidental contact with live part. You can install, operate and maintain modular device with total confidence.



Energy limiting class - 3

If fault occurs, the Rapid Arc Quenching mechanism in modular device operates and extinguishes the arc quickly (within 3-5 msec), ensuring lowest possible energy flow through the circuit. This minimize risk of fire and maximizes life of your equipment.

Safety meets superior aesthetics

Ergonomically designed, profiled for superior cooling and manufactured with fire retardant material. Modular device is brought to you keeping in mind utmost user safety.

Key Benefits



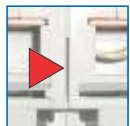
True contact indication

E&A modular device range enhances safety through true contact indication even from a distance regardless of its mounting and knob position. Red and Green indication tags provided below the knob positively identify the electrical ON/OFF status, reflecting actual contact status.



Integrated label holder

E&A MCBs are equipped with label holder for easy identification of circuit during operation as well as in maintenance.



Innovatively profiled breathing channels

When two or more poles are placed adjacent to each other, the breathing channels are so profiled that the air circulates around individual pole, resulting in cooler operation.



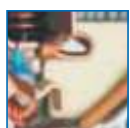
Large terminal size and Biconnect

Exora MCB's can easily accommodate cables of up to 35 sq.mm. Biconnect terminals offer convenience of connecting both cable and bus bar.



Two position DIN rail clip

Installation on a DIN rail is further simplified with a two-position DIN rail clip as a standard feature. E&A MCB range makes mounting on a standard DIN rail more convenient.



Non-welding contacts

Silver Graphite contact tips ensure higher life and maximum safety against contact welding due to its superior anti-welding properties, enhancing safety and life of the system.



Combihead screw

E&A modular devices with combihead screws, allow you to use standard as well as Philips head screw drivers. E&A modular device range addresses your undefined needs.



Miniature Circuit Breaker (MCB) [8536]



Range Highlights

- › True contact indication for individual pole
- › Label holder facility for all configurations
- › Conforms to IS/IEC 60898 - 10kA
- › Conforms to IEC 60947 - 2
 - » 15kA C-curve till 40 A
 - » 10kA C-curve for 50A, 63A
- › Available in B, C & D curves
- › Low watt loss - almost 50% of the values prescribed by IS/IEC 60898
- › Trip free mechanism
- › Design based on advanced current limiting hammer trip mechanism
- › No Line-Load bias
- › Bi connect feature on both side
- › Suitable for accessory fitment



Rating	Modules 1 Mod = 17.5 mm	B-Curve Cat. No.	M.R.P. (₹) Per Unit	C-Curve Cat. No.	M.R.P. (₹) Per Unit	D-Curve Cat. No.	M.R.P. (₹) Per Unit
Single Pole (SP)							
0.5A	1	-	-	BB10E50C	455	BB10E50D	460
1A	1	-	-	BB10010C	455	BB10010D	460
2A	1	-	-	BB10020C	455	BB10020D	460
3A	1	-	-	BB10030C	455	BB10030D	460
4A	1	-	-	BB10040C	455	BB10040D	460
6A	1	BB10060B	280	BB10060C	280	BB10060D	385
10A	1	BB10100B	280	BB10100C	280	BB10100D	385
16A	1	BB10160B	280	BB10160C	280	BB10160D	385
20A	1	BB10200B	280	BB10200C	280	BB10200D	385
25A	1	BB10250B	280	BB10250C	280	BB10250D	385
32A	1	BB10320B	280	BB10320C	280	BB10320D	385
40A	1	BB10400B	645	BB10400C	645	BB10400D	695
50A	1	BB10500B	645	BB10500C	645	BB10500D*	695
63A	1	BB10630B	645	BB10630C	645	BB10630D*	695
Double Pole (DP)							
0.5A	2	-	-	BB20E50C	1270	BB20E50D	1290
1A	2	-	-	BB20010C	1270	BB20010D	1290
2A	2	-	-	BB20020C	1270	BB20020D	1290
3A	2	-	-	BB20030C	1270	BB20030D	1290
4A	2	-	-	BB20040C	1270	BB20040D	1290
6A	2	BB20060B	910	BB20060C	910	BB20060D	940
10A	2	BB20100B	910	BB20100C	910	BB20100D	940
16A	2	BB20160B	910	BB20160C	910	BB20160D	940
20A	2	BB20200B	910	BB20200C	910	BB20200D	940
25A	2	BB20250B	910	BB20250C	910	BB20250D	940
32A	2	BB20320B	910	BB20320C	910	BB20320D	940
40A	2	BB20400B	1470	BB20400C	1470	BB20400D	1535
50A	2	BB20500B	1470	BB20500C	1470	BB20500D*	1535
63A	2	BB20630B	1470	BB20630C	1470	BB20630D*	1535
Three Pole (TP)							
0.5A	3	-	-	BB30E50C	1865	BB30E50D	1895
1A	3	-	-	BB30010C	1865	BB30010D	1895
2A	3	-	-	BB30020C	1865	BB30020D	1895
3A	3	-	-	BB30030C	1865	BB30030D	1895
4A	3	-	-	BB30040C	1865	BB30040D	1895
6A	3	BB30060B	1450	BB30060C	1450	BB30060D	1510
10A	3	BB30100B	1450	BB30100C	1450	BB30100D	1510
16A	3	BB30160B	1450	BB30160C	1450	BB30160D	1510
20A	3	BB30200B	1450	BB30200C	1450	BB30200D	1510
25A	3	BB30250B	1450	BB30250C	1450	BB30250D	1510
32A	3	BB30320B	1450	BB30320C	1450	BB30320D	1510
40A	3	BB30400B	2235	BB30400C	2235	BB30400D	2340
50A	3	BB30500B	2235	BB30500C	2235	BB30500D*	2340
63A	3	BB30630B	2235	BB30630C	2235	BB30630D*	2340

Note: Standard Pack Quantity for MCB : SP - 12 Nos., DP - 6 Nos., TP - 4 Nos., FP - 3 Nos.

* For details, please contact nearest branch office

Miniature Circuit Breaker (MCB) [8536]



Rating	Modules 1 Mod = 17.5 mm	B-Curve Cat. No.	M.R.P. (₹) Per Unit	C-Curve Cat. No.	M.R.P. (₹) Per Unit	D-Curve Cat. No.	M.R.P. (₹) Per Unit
Four Pole (FP)							
0.5A	4	-	-	BB40E50C	2345	BB40E50D	2350
1A	4	-	-	BB40010C	2345	BB40010D	2350
2A	4	-	-	BB40020C	2345	BB40020D	2350
3A	4	-	-	BB40030C	2345	BB40030D	2350
4A	4	-	-	BB40040C	2345	BB40040D	2350
6A	4	BB40060B	1980	BB40060C	1980	BB40060D	2030
10A	4	BB40100B	1980	BB40100C	1980	BB40100D	2030
16A	4	BB40160B	1980	BB40160C	1980	BB40160D	2030
20A	4	BB40200B	1980	BB40200C	1980	BB40200D	2030
25A	4	BB40250B	1980	BB40250C	1980	BB40250D	2030
32A	4	BB40320B	1980	BB40320C	1980	BB40320D	2030
40A	4	BB40400B	2805	BB40400C	2805	BB40400D	3010
50A	4	BB40500B	2805	BB40500C	2805	BB40500D*	3010
63A	4	BB40630B	2805	BB40630C	2805	BB40630D*	3010

Note: Standard Pack Quantity for MCB : SP - 12 Nos., DP - 6 Nos., TP- 4 Nos., FP - 3 Nos.

MCBs (Miniature Circuit Breakers) : 80A-125A [8536]

Range Highlights

- › Short circuit Breaking Capacity - 15kA (IEC 60947-2, EN 60947-2)
- › C & D Characteristics
- › Available in SP, DP, TP and FP
- › Suitable for Isolation
- › Protection Degree - IP 20
- › Availability of wide Range of Site Mountable Accessories



Rating	Module	C Curve Cat. No.	M.R.P. (₹) Per Unit	D Curve Cat. No.	M.R.P. (₹) Per Unit
Single Pole (SP)					
80A	1.5	AU15S10803C	2550	AU15S10803D	2900
100A	1.5	AU15S11003C	2855	AU15S11003D	3245
125A	1.5	AU15S11253C	3070	AU15S11253D	3510
Double Pole (DP)					
80A	3	AU15S20803C	5650	AU15S20803D	6430
100A	3	AU15S21003C	6025	AU15S21003D	6855
125A	3	AU15S21253C	6630	AU15S21253D	7540
Three Pole (TP)					
80A	4.5	AU15S30803C	8915	AU15S30803D	10150
100A	4.5	AU15S31003C	9505	AU15S31003D	10805
125A	4.5	AU15S31253C	10545	AU15S31253D	11985
Four Pole (FP)					
80A	6	AU15S40803C	11640	AU15S40803D	13215
100A	6	AU15S41003C	12105	AU15S41003D	13775
125A	6	AU15S41253C	13710	AU15S41253D	15585

We are thrilled to announce that
Exora has been recognised as the
Best Brand 2023
 by The Economic Times



Solar Combo MCBs

Complete Protection for Solar Rooftop Installations

Combo Pack

Tested for Reliable
Performance



DC MCB



AC MCB

- [1 DP DC (500V) MCB] + [1 DP AC MCB] in a combo pack
- Provides complete protection for DC and AC sides of solar rooftop installations
- DC MCB : 10kA as per IEC 60947-2
- AC MCB : 10kA as per IS/IEC 60898-1



Miniature Circuit Breaker (MCB) [8536]



DC MCBs as per IEC 60947-2 [8536]

Rated Voltage:
Breaking capacity of 6 kA - BB Series DC MCBs

130V DC SP MCB

Rating	Modules 1 Mod = 17.5mm	Cat. No.	M.R.P. (₹) Per Unit
Single Pole (SP)			
0.5A	1	BB10E5DC	660
1A	1	BB1001DC	660
2A	1	BB1002DC	660
3A	1	BB1003DC	660
4A	1	BB1004DC	660
6A	1	BB1006DC	570
10A	1	BB1010DC	570
16A	1	BB1016DC	570
20A	1	BB1020DC	570
25A	1	BB1025DC	570
32A	1	BB1032DC	570
40A	1	BB1040DC	750
50A	1	BB1050DC	750
63A	1	BB1063DC	750



Rated Voltage:
Breaking capacity of 10 kA - BJ Series DC MCBs

250V DC SP MCB

Rating	Modules 1 Mod = 17.5mm	Cat. No.	M.R.P. (₹) Per Unit
Single Pole (SP)			
0.5A	1	BJ10E5DC	810
1A	1	BJ1001DC	810
2A	1	BJ1002DC	810
3A	1	BJ1003DC	810
4A	1	BJ1004DC	810
6A	1	BJ1006DC	660
10A	1	BJ1010DC	660
16A	1	BJ1016DC	660
20A	1	BJ1020DC	660
25A	1	BJ1025DC	660
32A	1	BJ1032DC	660
40A	1	BJ1040DC	915
50A	1	BJ1050DC	915
63A	1	BJ1063DC	915

250V DC DP MCB

0.5A	2	BB20E5DC	1410
1A	2	BB2001DC	1410
2A	2	BB2002DC	1410
3A	2	BB2003DC	1410
4A	2	BB2004DC	1410
6A	2	BB2006DC	1240
10A	2	BB2010DC	1240
16A	2	BB2016DC	1240
20A	2	BB2020DC	1240
25A	2	BB2025DC	1240
32A	2	BB2032DC	1240
40A	2	BB2040DC	1680
50A	2	BB2050DC	1680
63A	2	BB2063DC	1680



New

500V DC DP MCB

0.5A	2	BJ20E5DC	1690
1A	2	BJ2001DC	1690
2A	2	BJ2002DC	1690
3A	2	BJ2003DC	1690
4A	2	BJ2004DC	1690
6A	2	BJ2006DC	1430
10A	2	BJ2010DC	1430
16A	2	BJ2016DC	1430
20A	2	BJ2020DC	1430
25A	2	BJ2025DC	1430
32A	2	BJ2032DC	1430
40A	2	BJ2040DC	1820
50A	2	BJ2050DC	1820
63A	2	BJ2063DC	1820

New

Note Standard Pack Quantity for MCB : SP - 12 Nos., DP - 6 Nos.

1000V DC MCBs [8536]

Rated Voltage: 1000V DC
with breaking capacity of 6 kA - BK Series DC MCBs

Description	Modules 1 Mod = 17.5mm	Cat. No.	M.R.P. (₹) Per Unit
DP 6A 1000V DC 6kA MCB	4	BK2006DC	2245
DP 10A 1000V DC 6kA MCB	4	BK2010DC	2245
DP 16A 1000V DC 6kA MCB	4	BK2016DC	2245
DP 20A 1000V DC 6kA MCB	4	BK2020DC	2245
DP 25A 1000V DC 6kA MCB	4	BK2025DC	2245
DP 32A 1000V DC 6kA MCB	4	BK2032DC	2245
DP 40A 1000V DC 6kA MCB	4	BK2040DC	2725
DP 50A 1000V DC 6kA MCB	4	BK2050DC	2725
DP 63A 1000V DC 6kA MCB	4	BK2063DC	2725

New



Solar Combo MCBs [8536] (AC MCB + DC MCB)

Description	Modules 1 Mod = 17.5mm	Cat. No.	M.R.P. (₹) Per Unit
1 AC 16A DP MCB [^] + 1 DC 16A DP 500V MCB	2+2	SC221616	1805
1 AC 25A DP MCB [^] + 1 DC 16A DP 500V MCB	2+2	SC222516	1805
1 AC 32A DP MCB [^] + 1 DC 16A DP 500V MCB	2+2	SC223216	1805
1 AC 32A DP MCB [^] + 1 DC 32A DP 500V MCB	2+2	SC223232	1805



[^]AC MCB with C-Curve

Isolators [8536]



Range Highlights

- › Conforms to IEC 60947-3
- › Utilization category AC-22A
- › Available in DP, TP and FP versions in 40A, 63A, 80A & 100A ratings



Rating	Modules 1 Mod = 17.5 mm	Cat. No.	M.R.P. (₹) Per Unit	Modules 1 Mod = 17.5 mm	Cat. No.	M.R.P. (₹) Per Unit	Modules 1 Mod = 17.5 mm	Cat. No.	M.R.P. (₹) Per Unit
Double Pole (DP)			Three Pole (TP)			Four Pole (FP)			
40A	2	BF204000	555	3	BF304000	965	4	BF404000	1250
63A	2	BF206300	715	3	BF306300	1125	4	BF406300	1305
80A	2	BF208000	910	3	BF308000	1235	4	BF408000	1465
100A	2	BF210000	950	3	BF310000	1315	4	BF410000	1580

Note: Standard Pack Quantity for Isolator : DP - 6 Nos., TP - 4 Nos., FP - 3 Nos.

RCCB (Residual Current Circuit Breaker) [8536]



Range Highlights

- › Conforms to IS 12640 (Part 1) / IEC 61008-1
- › RCCBs are available in DP and FP versions from 25 to 100A ratings with 30 mA, 100 mA and 300mA sensitivity



- › Truly current operated - operation even at nominal voltage
- › Operates on Core Balance Current Transformer (CBCT) principle
- › Advanced neutral mechanism

Rating	Sensitivity	Modules 1 Mod =17.5 mm	Cat. No.	M.R.P. (₹) Per Unit
Double Pole (DP)				
25A	30 mA	2	BG202503	3205
	100 mA	2	BG202510	3330
	300 mA	2	BG202530	3330
40A	30 mA	2	BG204003	3595
	100 mA	2	BG204010	3805
	300 mA	2	BG204030	3805
63A	30 mA	2	BG206303	4485
	100 mA	2	BG206310	4595
	300 mA	2	BG206330	4595
100A	30 mA	2	BG210003	7825
	100 mA	2	BG210010	7925
	300 mA	2	BG210030	7925

Rating	Sensitivity	Modules 1 Mod =17.5 mm	Cat. No.	M.R.P. (₹) Per Unit
Four Pole (FP)				
25A	30 mA	4	BG402503	4235
	100 mA	4	BG402510	4345
	300 mA	4	BG402530	4345
40A	30 mA	4	BG404003	4275
	100 mA	4	BG404010	4420
	300 mA	4	BG404030	4420
63A	30 mA	4	BG406303	4835
	100 mA	4	BG406310	5070
	300 mA	4	BG406330	5070
100A	30 mA	4	BG410003	8345
	100 mA	4	BG410010	8490
	300 mA	4	BG410030	8490

RCCBs (Residual Current Circuit Breakers) : Type-Adi (with Added immunity)[8536]



Range Highlights

- › Wide Range of Current Ratings - 25A to 100A
- › Precise Sensitivities for variety of applications - from 30mA to 300mA
- › 2P & 4P versions
- › Suitable for Isolation
- › Protection Degree - IP 20
- › Availability of wide Range of Site Mountable Accessories
- › Type Adi: Suitable for AC + Pulsating DC (Type A) + Harmonics

Rating	Sensitivity	Module	CAT Nos.	M.R.P. (₹) Per Unit
2P Adi				
25A	30mA	2	AURAD202503	5130
	100mA	2	AURAD202510	5360
	300mA	2	AURAD202530	5360
40A	30mA	2	AURAD204003	5445
	100mA	2	AURAD204010	5530
	300mA	2	AURAD204030	5530
63A	30mA	2	AURAD206303	6365
	100mA	2	AURAD206310	6485
	300mA	2	AURAD206330	6485
100A	30mA	2	AURAD210003	9405

Rating	Sensitivity	Module	CAT Nos.	M.R.P. (₹) Per Unit
4P Adi				
25A	30mA	4	AURAD402503	6200
	100mA	4	AURAD402510	6320
	300mA	4	AURAD402530	6320
40A	30mA	4	AURAD404003	6440
	100mA	4	AURAD404010	6540
	300mA	4	AURAD404030	6540
63A	30mA	4	AURAD406303	7010
	100mA	4	AURAD406310	7155
	300mA	4	AURAD406330	7155
100A	30mA	4	AURAD410003	11165
	300mA	4	AURAD410030	11165

All-Rounder RCDs (RCCB & RCBO)

Specially designed Adi RCDs ensure Safe and Reliable protection for All Applications in AC networks with Pulsating DC along with Harmonics

Type A

AC

Harmonics



Added Immunity

RCBOs (Residual Current Breaker with Overcurrent Protection) [8536]



Range Highlights*

- › Conforms to IEC 61009-1, IS 12640-2, EN 61009-1
- › Short circuit Breaking Capacity - 10kA
- › Precise Sensitivities for a variety of applications
 - » from 10mA to 300mA
- › Suitable for Isolation



- › Availability of wide Range of Site Mountable Accessories
- › Available in
 - » Type AC: For standard AC installations
 - » Type Adi: Suitable for AC + Pulsating DC (Type A) + Harmonics

Type-AC

Rating	Sensitivity	Module	CAT Nos.	M.R.P. (₹) Per Unit
2P AC				
6A	10mA	2	AUF3C200601	4745
	30mA	2	AUF3C200603	4745
	100mA	2	AUF3C200610	4845
	300mA	2	AUF3C200630	4900
10A	10mA	2	AUF3C201001	4745
	30mA	2	AUF3C201003	4745
	100mA	2	AUF3C201010	4845
	300mA	2	AUF3C201030	4900
16A	10mA	2	AUF3C201601	4745
	30mA	2	AUF3C201603	4745
	100mA	2	AUF3C201610	4845
	300mA	2	AUF3C201630	4900
20A	30mA	2	AUF3C202003	4745
	100mA	2	AUF3C202010	4845
	300mA	2	AUF3C202030	4900
25A	30mA	2	AUF3C202503	4745
	100mA	2	AUF3C202510	4845
	300mA	2	AUF3C202530	4900
32A	30mA	2	AUF3C203203	4745
	100mA	2	AUF3C203210	4845
	300mA	2	AUF3C203230	4900
40A	30mA	2	AUF3C204003	4745
	100mA	2	AUF3C204010	4845
	300mA	2	AUF3C204030	4900
63A	30mA	4	AUF3C206303	5940
	100mA	4	AUF3C206310	6300
	300mA	4	AUF3C206330	6350
4P AC				
16A	30mA	7.5	AUF3C401603	5370
	100mA	7.5	AUF3C401610	5980
	300mA	7.5	AUF3C401630	6100
20A	30mA	7.5	AUF3C402003	5370
	100mA	7.5	AUF3C402010	5980
	300mA	7.5	AUF3C402030	6100
25A	30mA	7.5	AUF3C402503	5370
	100mA	7.5	AUF3C402510	5980
	300mA	7.5	AUF3C402530	6100
32A	30mA	7.5	AUF3C403203	5545
	100mA	7.5	AUF3C403210	5985
	300mA	7.5	AUF3C403230	6115
40A	30mA	7.5	AUF3C404003	5635
	100mA	7.5	AUF3C404010	5985
	300mA	7.5	AUF3C404030	6135
63A	30mA	7.5	AUF3C406303	6750
	100mA	7.5	AUF3C406310	6875
	300mA	7.5	AUF3C406330	6875
80A	30mA	12	AUF3C408003	25685
	100mA	12	AUF3C408010	26260
	300mA	12	AUF3C408030	26260
100A	30mA	12	AUF3C410003	27460
	100mA	12	AUF3C410010	28115
	300mA	12	AUF3C410030	28115

Type-Adi

Rating	Sensitivity	Module	CAT Nos.	M.R.P. (₹) Per Unit
2P Adi				
6A	30mA	2	AUF3D200603	6285
	100mA	2	AUF3D200610	6920
	300mA	2	AUF3D200630	7180
	30mA	2	AUF3D201003	6285
10A	100mA	2	AUF3D201010	6920
	300mA	2	AUF3D201030	7180
	30mA	2	AUF3D201603	6285
16A	100mA	2	AUF3D201610	6920
	300mA	2	AUF3D201630	7180
	30mA	2	AUF3D202003	6285
20A	100mA	2	AUF3D202010	6920
	300mA	2	AUF3D202030	7180
	30mA	2	AUF3D202503	6285
25A	100mA	2	AUF3D202510	6920
	300mA	2	AUF3D202530	7180
	30mA	2	AUF3D203203	6285
32A	100mA	2	AUF3D203210	6920
	300mA	2	AUF3D203230	7180
	30mA	2	AUF3D204003	6285
40A	100mA	2	AUF3D204010	6920
	300mA	2	AUF3D204030	7180
	30mA	4	AUF3D206303	7665
63A	100mA	4	AUF3D206310	8110
	300mA	4	AUF3D206330	8180
	4P Adi			
16A	30mA	7.5	AUF3D401603	6925
	100mA	7.5	AUF3D401610	7705
	300mA	7.5	AUF3D401630	7860
20A	30mA	7.5	AUF3D402003	6925
	100mA	7.5	AUF3D402010	7705
	300mA	7.5	AUF3D402030	7860
25A	30mA	7.5	AUF3D402503	6925
	100mA	7.5	AUF3D402510	7705
	300mA	7.5	AUF3D402530	7860
32A	30mA	7.5	AUF3D403203	7150
	100mA	7.5	AUF3D403210	7710
	300mA	7.5	AUF3D403230	7870
40A	30mA	7.5	AUF3D404003	7255
	100mA	7.5	AUF3D404010	7710
	300mA	7.5	AUF3D404030	7905
63A	30mA	7.5	AUF3D406303	8695
	100mA	7.5	AUF3D406310	8870
	300mA	7.5	AUF3D406330	8870
80A	30mA	12	AUF3D408003	25685
	100mA	12	AUF3D408010	26260
	300mA	12	AUF3D408030	26260
100A	30mA	12	AUF3D410003	27460
	100mA	12	AUF3D410010	28115
	300mA	12	AUF3D410030	28115

* For technical details, please contact nearest branch office

SPDs (Surge Protection Devices) [8536]



Range Highlights

- › Conforms to IEC 61643-11
- › Available in Type 2 and Type 1+2
- › Type 2 : Protection against indirect lightning and switching surges
 - › Maximum Discharge Current - I_{max} up to 70kA
- › Type 1+2 : Protection against direct and indirect lightning surges
 - › Maximum Discharge Current - I_{max} up to 100kA

800V Solar Application

Description	Configuration	Module	Voltage (Uc)	Cat. No.	M.R.P. (₹) Per Unit
Type 2, I _{imp} 12.5kA	3P	4	1500	AUSP023P40-1500	12500
Type 1+2, I _{imp} 12.5kA	3P	5	1360	AUSP123P50-1360	41430
Type 1+2, I _{imp} 12.5kA	3P	4	880	AUSP123P50-880	30000

440V Application

Description	I _{max}	Configuration	Module	Cat. No.	M.R.P. (₹) Per Unit
Type 1+2, I _{imp} 12.5kA	50kA	1P+N	2	AUSP121PN50	10045
		3P+N	4	AUSP123PN50	19235
Type 2	40kA	1P+N	1	AUSP021PN40	6275
		3P+N	2	AUSP023PN40	12545
Type 2	15kA	1P+N	1	AUSP021PN15	5020
		3P+N	2	AUSP023PN15	9875
Type 1+2, I _{imp} 8kA	100kA	1P+N	2	AUSP121PN100	9030
		3P+N	4	AUSP123PN100	17740
Type 2	70kA	1P+N	2	AUSP021PN70	9855
		3P+N	4	AUSP023PN70	16420

Extend SPD life with Spare Cartridges

Description	Cat. No.	M.R.P. (₹) Per Unit
Cartridge for AUSP021PN15	AUSC021PN15	2515
Cartridge for AUSP021PN40	AUSC021PN40	3135
Cartridge for AUSP021PN70 / AUSP023PN70	AUSC021PN70	3350
Cartridge for AUSP023PN15	AUSC023PN15	3290
Cartridge for AUSP023PN40	AUSC023PN40	4185
Cartridge for AUSP121PN100 / AUSP123PN100	AUSC121PN100	5020
Cartridge for AUSP121PN50 / AUSP123PN50	AUSC121PN50	5420

Changeover Switches (Automatic Changeover with Current Limiter, CO) [8536]

Single Phase ACCL



Range Highlights

- › Conforms to IEC 60947-6, IEC 60947-3
- › Wide Range of Current Ratings
 - › (Generator side) - 1A to 30A
 - › (Electricity Board side) - 30A
- › RoHS compliant

Description EB/DG	Module	CAT Nos.	M.R.P. (₹) Per Unit
30A/1A	4	AUCL01030001	2410
30A/1.5A	4	AUCL010301E5	2410
30A/2A	4	AUCL01030002	2410
30A/2.5A	4	AUCL010302E5	2410
30A/3A	4	AUCL01030003	2410
30A/4A	4	AUCL01030004	2410
30A/5A	4	AUCL01030005	2410
30A/6A	4	AUCL01030006	2410
30A/8A	4	AUCL01030008	2410
30A/10A	4	AUCL01030010	2410
30A/12A	4	AUCL01030012	2410
30A/15A	4	AUCL01030015	2410
30A/20A	4	AUCL01030020	2410
30A/30A	4	AUCL01030030*	2410

* Non-current limiting variant

Changeover Switches

Rating	Module	Cat. No.	M.R.P. (₹) Per Unit
Double Pole			
25A	2	AUC00202500	1630
40A	2	AUC00204000	2490
63A	3	AUC00206300	2900

Three Phase ACCL



Range Highlights

- › Settable overload current limit at DG side
- › Separate power consumption monitoring for Mains & Genset
- › Settable overvoltage & undervoltage protection
- › Settable TPN or SPN mode at DG side
- › Protection against single phasing

Description (AC-1) EB/DG	Cat. No.	M.R.P. (₹) Per Unit
32A / 32A	AUCL03032032	10165
40A / 32A	AUCL03040032	10475
40A / 40A	AUCL03040040	11340
50A / 50A	AUCL03050050	16155
63A / 50A	AUCL03063050	17830
63A / 63A	AUCL03063063	20195
80A / 80A	AUCL03080080	30780
125A / 125A	AUCL03125125	51815

For 3 Phase ACCL programming video please scan the QR code or click here



Range Highlights

- › Conforms to IEC 60947-3 and IS/IEC 60947-3
- › Available in 3 positions (I-O-II) with centre off position
- › Utilization category AC-22A



Rating	Module	Cat. No.	M.R.P. (₹) Per Unit
Four Pole			
40A	4	AUC00404000	4290
63A	6	AUC00406300	4865



Modular Contactors [8536]



Range Highlights

- › Wide Range of Current Ratings:
 - » 25A, 40A and 63A
- › Conforms to :
 - » IEC 61095, EN 61095
 - » IEC 60947-4-1, EN 60947-4-1
 - » IEC 60947-5-1
- › Protection Degree IP 20

Description (AC-1)	Module	Cat. No.	M.R.P. (₹) Per Unit
25A-1NO	1	AUMC1002501	1810
25A-2NO	1	AUMC2002501	2265
40A-2NO	3	AUMC2004003	3880
40A-3NO	3	AUMC3004003	5560
40A-4NO	3	AUMC4004003	6525
63A-2NO+2NC	3	AUMC2206303	6895
63A-3NO	3	AUMC3006303	7065
63A-4NO	3	AUMC4006303	7780
Accessory [8538]			
Auxiliary Contact, 2NO	0.5	AUMCAUX240	1740

Time Switches [9107]



Description	Module	Cat. No.	M.R.P. (₹) Per Unit
Analog time switch	1	AUTS01ANA00*	4645
Analog time switch	3	AUTS03ANA00*	5650
Digital time switch	2	AUTS02DIG00*	3595
Astro time switch	2	AUTS02AST00*	6040
Digital time switch	2	67DDT0*	2355
Astro time switch	2	T2DDT7*	4410

*Available till stocks last

Energy Meters [9030]



Range Highlights

- › Communication with additional RS485
- › Class 1 accuracy
- › Direct current operated meter
- › Reverse current indication for three-phase meter

Description	Module	Cat. No.	M.R.P. (₹) Per Unit
Single Phase - 60A	2	WD4010100000	2630
Three Phase - 80A	5	WD4020100000	5975
Single Phase - 60A (RS485)	2	WD4010110000	4200
Three Phase - 80A (Rs485)	5	WD4020110000	8605

Accessories

Accessories [8538]



All Half Module and One Module Accessories are common for 80A-125A MCBs, RCBOs and Adi RCCBs

Description	Configuration	Module	Voltage	CAT Nos.	M.R.P. (₹) Per Unit
Auxiliary Contact	1NO+1NC	0.5	240V AC, 24V DC	AUAXAC240	940
AUX/TAC*	1NO+1NC	0.5	240V AC, 24V DC	AUATAC240	1105
HR AUX/TAC*	1NO+1NC	0.5	240V AC, 24V DC	AUATAC240HR	1105
Undervoltage Release	-	1	240V AC	AUUVAC240	2225
Release	-	1	24V DC	AUUVDC024	2225
Oversvoltage Release	-	1	240V AC	AUOVAC240	2750
Shunt Release	-	1	240V AC	AUSRAC240	2550
	-	1	24V DC	AUSRDC024	2550
Padlock-Suitable for Lock Hasp 3.5 - 5 mm dia. max	Suitable for 1Pole=1Mod devices: RCCBs, RCBOs, Changeover Switches up to 40A			AUPD01	505
	Suitable for 1Pole-1.5Mod devices: MCBs 80A-125A, Changeover Switch 63A			AUPD02	570

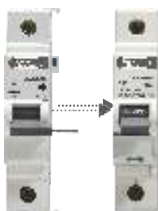
Note: Standard Pack Quantity for Padlock - 2 Nos.

Indicating Lights [8531]



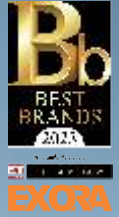
Description	Module	Cat. No.	M.R.P. (₹) Per Unit
RED	1	AUILO1RED00	1035
YELLOW	1	AUILO1YEL00	1035
BLUE	1	AUILO1BLU00	1035
GREEN	1	AUILO1GRE00	1035
RED-YELLOW-BLUE	1	AUILO1RYB00	1255

Auxiliary & Accessories for Exora MCBs [8538]



Description	Cat. No.	M.R.P. (₹) Per Unit
Auxiliary Contact - 6A, 240V AC, (1NO+1NC), 0.5 Mod	BZA11006	885
Shunt Release - 240V AC, 1 Mod	BZS00240	2425
Trip Alarm Contact - 6A, 240V AC, (1NO+1NC), 0.5 Mod	BZT11006	1040

Specially Designed



Distribution Board suitable for Aluminum shuttering (Mivan) Construction



> To experience Scan or click



DBs suitable for Aluminum Shuttering Construction [8537]

SPN DBs

Highlights

- › Available in CRCA sheet steel, RAL9003, powder coated
- › Ready to use DBs - Provided with 100A insulated phase bus-bar | neutral bar/s with shroud/s | earth bar/s | sticking saddles | cement spill protector | color-coded interconnecting wire set | cable ties | blanking plates and circuit identification label
- › With provision for DP MCB/Isolator/RCCB/RCBO as incomer and SP MCBs as outgoing

Description	No. of Modules		Cat. Nos.	M.R.P. (₹) Per Unit
	Incomer + Outgoing			
IP 43 - Metal Door				
4 way	2	2	LTSD04M	*
6 way	2	4	LTSD06M	*
8 way	2	6	LTSD08M	*
12 way	2	10	LTSD12M	*
16 way	2	14	LTSD16M	*

TPN DBs

Highlights

- › Available in CRCA sheet steel, RAL 9003, powder coated
- › Ready to use DBs - Provided with 100A insulated phase bus-bars | neutral bar/s with shroud/s | earth bar/s | sticking saddles | cement spill protector | color-coded interconnecting wire set | cable ties | blanking plates and circuit identification labels
- › With provision for FP MCB/Isolator/RCCB/RCBO as incomer and SP MCBs as outgoing

Description	No. of Modules		Cat. Nos.	M.R.P. (₹) Per Unit
	Incomer + Outgoing			
IP 43 - Metal Door				
4 way	8	4+4+4	LTTD04M	*
6 way	8	6+6+6	LTTD06M	*
8 way	8	8+8+8	LTTD08M	*

* For details, please contact nearest branch office

Highlights

- › Conforms to IS 8623-1 & 3, IEC 61439-1 & 3
- › IK 08-for single door DBs, IK 09-for double door DBs
- › Available in CRCA sheet steel, RAL9003, powder coated
- › Ready to use DBs - Provided with 100A insulated phase bus-bar | neutral bar/s with shroud/s | earth bar/s | sticking saddles | cement spill protector | color-coded interconnecting wire set | cable ties | blanking plates and circuit identification label
- › With provision for DP MCB/Isolator/RCCB/RCBO as incomer and SP MCBs as outgoing



Description	No. of Modules		Cat. Nos.	M.R.P. (₹) Per Unit
	Incomer + Outgoing			
IP 30 - Single Door				
4 way	2	2	DESPN004SDS	1510
6 way	2	4	DESPN006SDS	1585
8 way	2	6	DESPN008SDS	1830
12 way	2	10	DESPN012SDS	2165
16 way	2	14	DESPN016SDS	2685
18 way	2	16	DESPN018SDS	3115
IP 43 - Metal Door				
4 way	2	2	DESPN004DDS	1960
6 way	2	4	DESPN006DDS	2260
8 way	2	6	DESPN008DDS	2410
12 way	2	10	DESPN012DDS	2890
16 way	2	14	DESPN016DDS	3655
18 way	2	16	DESPN018DDS	3860
IP 43 - Glazed Door				
4 way	2	2	DESPN004GDS	2625
6 way	2	4	DESPN006GDS	2795
8 way	2	6	DESPN008GDS	3040
12 way	2	10	DESPN012GDS	3700
16 way	2	14	DESPN016GDS	4595
18 way	2	16	DESPN018GDS	4890
IP 54 - Metal Door				
4 way	2	2	DESPN00454S	6910
6 way	2	4	DESPN00654S	7705
8 way	2	6	DESPN00854S	8195
12 way	2	10	DESPN01254S	9410
16 way	2	14	DESPN01654S	10480
18 way	2	16	DESPN01854S	10710

Highlights

- › Conforms to IS 8623-1 & 3, IEC 61439-1 & 3
- › IK 08-for single door DBs, IK 09-for double door DBs
- › Available in CRCA sheet steel, RAL 9003, powder coated
- › Ready to use DBs - Provided with 100A insulated phase bus-bars | neutral bar/s with shroud/s | earth bar/s | sticking saddles | cement spill protector | color-coded interconnecting wire set | cable ties | blanking plates and circuit identification labels
- › With provision for FP MCB/Isolator/RCCB/RCBO as incomer and SP MCBs as outgoing



Description	No. of Modules		Cat. Nos.	M.R.P. (₹) Per Unit
	Incomer	Outgoing		
IP 30 - Single Door				
4 way	4	4+4+4	DETPN004SDS	3940
6 way	4	6+6+6	DETPN006SDS	4840
4 way	8	4+4+4	DETPN004SDS	4135
6 way	8	6+6+6	DETPN006SDS	5095
8 way	8	8+8+8	DETPN008SDS	6010
12 way	8	12+12+12	DETPN012SDS	8655
16 way	8	16+16+16	DETPN016SDS	10650
IP 43 - Metal Door				
4 way	4	4+4+4	DETPN004DDS	4610
6 way	4	6+6+6	DETPN006DDS	5730
4 way	8	4+4+4	DETPN004DDS	4825
6 way	8	6+6+6	DETPN006DDS	6010
8 way	8	8+8+8	DETPN008DDS	7215
12 way	8	12+12+12	DETPN012DDS	10760
16 way	8	16+16+16	DETPN016DDS	13350
IP 43 - Glazed Door				
4 way	4	4+4+4	DETPN004GDS	6265
6 way	4	6+6+6	DETPN006GDS	7525
4 way	8	4+4+4	DETPN004GDS	6515
6 way	8	6+6+6	DETPN006GDS	7880
8 way	8	8+8+8	DETPN008GDS	9365
12 way	8	12+12+12	DETPN012GDS	14365
16 way	8	16+16+16	DETPN016GDS	17265
IP 54 - Metal Door				
4 way	4	4+4+4	DETPN00454S	15645
6 way	4	6+6+6	DETPN00654S	18285
4 way	8	4+4+4	DETPN00454S	16615
6 way	8	6+6+6	DETPN00654S	20005
8 way	8	8+8+8	DETPN00854S	21870
12 way	8	12+12+12	DETPN01254S	30825
16 way	8	16+16+16	DETPN01654S	36995



Highlights

- > Conforms to IS 8623-1 & 3, IEC 61439-1 & 3
- > IK 09-for double door DBs
- > Available in CRCA sheet steel, RAL 9003, powder coated
- > Ready to use DBs - Provided with 100A insulated phase bus-bars | neutral bar/s with shroud/s | earth bar/s | sticking saddles | cement spill protector | color-coded interconnecting wire set | cable ties | blanking plates and circuit identification labels
- > With provision for FP MCB / Isolator / RCCB / RCBO as incomer, DP RCCB/RCBO as sub-incomer and SP MCBs as outgoing



Horizontal PPI DBs

IP 43 - Metal Door

Description	No. of Modules			Cat. Nos.	M.R.P. (₹) Per Unit
	Incomer	Sub-Incomer	Outgoing		
IP 43 - Metal Door					
4 way	8	2+2+2	4+4+4	DEHPI004DD	8515
6 way	8	2+2+2	6+6+6	DEHPI006DD	10085
8 way	8	2+2+2	8+8+8	DEHPI008DD	12095
12 way	8	2+2+2	12+12+12	DEHPI012DD	16660
16 way	8	2+2+2	16+16+16	DEHPI016DD	19985



Tier PPI DBs

Description	No. of Modules			Cat. Nos.	M.R.P. (₹) Per Unit
	Incomer	Sub-Incomer	Outgoing		
IP 43 - Metal Door					
6 way	8	2+2+2	6+6+6	DETPPI006DD	10460
8 way	8	2+2+2	8+8+8	DETPPI008DD	13115
10 way	8	2+2+2	10+10+10	DETPPI010DD	13750
12 way	8	2+2+2	12+12+12	DETPPI012DD	14565
16 way	8	2+2+2	16+16+16	DETPPI016DD	16610
12 way	MCCB*	2+2+2	12+12+12	DETPPL012DD	15580

* Suitable for 3 Pole & 4 Pole DU100H, DU100D, DN0-100D & DN0-100C MCCB as incomer



Highlights

- > Conforms to IS 8623-1 & 3, IEC 61439-1 & 3
- > IK 09-for double door DBs
- > Available in CRCA sheet steel, RAL 9003, powder coated
- > Ready to use DBs - Provided with 100A insulated phase bus-bars | neutral bar/s with shroud/s | earth bar/s | sticking saddles | cement spill protector | color-coded interconnecting wire set | cable ties | blanking plates and circuit identification labels
- > With provision for
 - » Modular Incomer - FP MCB/Isolator/RCCB/RCBO as incomer, DP RCCB/RCBO as sub-incomer and SP MCBs as outgoing
 - » MCCB Incomer - MCCB* as incomer, DP RCCB/RCBO as sub-incomer and SP MCBs as outgoing



With Modular Incomer

Description	No. of Modules			Cat. Nos.	M.R.P. (₹) Per Unit
	Incomer	Sub-Incomer	Outgoing		
IP 43 - Metal Door					
4 way	8	4+4+4	4+4+4	DEPSG004DD	12775
6 way	8	4+4+4	6+6+6	DEPSG006DD	14405
8 way	8	4+4+4	8+8+8	DEPSG008DD	16070
12 way	8	4+4+4	12+12+12	DEPSG012DD	19935



With MCCB Incomer

Description	No. of Modules			Cat. Nos.	M.R.P. (₹) Per Unit
	Incomer*	Sub-Incomer	Outgoing		
IP 43 - Metal Door					
4 way	MCCB	4+4+4	4+4+4	DEPGL004DD	17570
6 way	MCCB	4+4+4	6+6+6	DEPGL006DD	20095
8 way	MCCB	4+4+4	8+8+8	DEPGL008DD	23240
12 way	MCCB	4+4+4	12+12+12	DEPGL012DD	26210

* Suitable for 3 Pole & 4 Pole DU100H, DU100D, DN0-100D & DN0-100C MCCB as incomer

New TPN Phase Selector DB [8537]

Highlights

- › Conforms to IS 8623-1 & 3, IEC 61439-1 & 3
- › IK 09-for double door DBs
- › Available in CRCA sheet steel, RAL 9003, powder coated
- › Ready to use DBs - Provided with 3 nos. of 63A E&A rotary switches | 3 nos. of rocker switches for phase identification | 100A insulated phase bus-bars | neutral bar/s with shroud/s | earth bar/s | sticking saddles | color-coded interconnecting wire set | cable ties | blanking plates and circuit identification labels
- › With provision for - FP MCB/Isolator/RCCB/RCBO as incomer and SP MCBs as outgoing



Description	No. of Modules		Cat. Nos.	M.R.P. (₹) Per Unit
	Incomer	Outgoing		
IP 43 - Metal Door				
4 way	8	4+4+4	DEPSR004DD	15765
6 way	8	6+6+6	DEPSR006DD	16015
8 way	8	8+8+8	DEPSR008DD	17155
10 way	8	10+10+10	DEPSR010DD	18330
12 way	8	12+12+12	DEPSR012DD	19325

Vertical TPN DB with Modular Incomer [8537]

Highlights

- › Conforms to IS 8623-1 & 3, IEC 61439-1 & 3
- › IK 09-for double door DBs
- › Available in CRCA sheet steel, RAL 9003, powder coated
- › Ready to use DBs - Provided with insulated vertical phase bus-bars | neutral bar/s with shroud/s | earth bar/s | sticking saddles | cement spill protector | color-coded interconnecting wire set | cable ties | blanking plates and circuit identification labels
- › With provision for FP MCB/Isolator/RCCB/RCBO as incomer and SP/TP MCBs as outgoing



Description	No. of Modules		Cat. Nos.	M.R.P. (₹) Per Unit
	Incomer	Outgoing		
IP 43 - Metal Door				
4 way	8	4+4+4	DEVTM004DD	11940
6 way	8	6+6+6	DEVTM006DD	13365
8 way	8	8+8+8	DEVTM008DD	15510
12 way	8	12+12+12	DEVTM012DD	21025
16 way	8	16+16+16	DEVTM016DD	24850
IP 54 - Metal Door				
4 way	8	4+4+4	DEVTM00454	25245
6 way	8	6+6+6	DEVTM00654	27670
8 way	8	8+8+8	DEVTM00854	30550

New Flexi/Row DB [8537]

Highlights

- › Conforms to IS 8623-1 & 3, IEC 61439-1 & 3
- › IK 09-for double door DBs
- › Available in CRCA sheet steel, RAL 9003, powder coated
- › Ready to use DBs - neutral bar/s with shroud/s | earth bar/s | sticking saddles | cement spill protector | cable ties | circuit identification labels
- › With provision to mount modular devices as per requirement



Description	No. of Modules Per Row	Cat. Nos.	M.R.P. (₹) Per Unit
2 Row 28 Module	14	DEROW228DD	6225
3 Row 42 Module	14	DEROW342DD	7465
4 Row 56 Module	14	DEROW456DD	8115
4 Row 64 Module	16	DEROW464DD	9440

Vertical TPN DB with MCCB Incomer [8537]

Highlights

- › Conforms to IS 8623-1 & 3, IEC 61439-1 & 3
- › IK 09-for double door DBs
- › Available in CRCA sheet steel, RAL 9003, powder coated
- › Ready to use DBs - Provided with insulated vertical phase bus-bars | neutral bar/s with shroud/s | earth bar/s | sticking saddles | cement spill protector | color-coded interconnecting wire set | cable ties | blanking plates and circuit identification labels
- › With provision for 3 pole and 4 Pole MCCB* as incomer and SP/TP MCBs as outgoing



Up to 125A MCCB Incomer

Description	No. of Modules		Cat. Nos.	M.R.P. (₹) Per Unit
	Incomer*	Outgoing		
IP 43 - Metal Door				
4 way	MCCB	4+4+4	DEVTL004DD	14120
6 way	MCCB	6+6+6	DEVTL006DD	16050
8 way	MCCB	8+8+8	DEVTL008DD	17670
12 way	MCCB	12+12+12	DEVTL012DD	24040
16 way	MCCB	16+16+16	DEVTL016DD	28675
IP 54 - Metal Door				
4 way	MCCB	4+4+4	DEVTL00454	29250
6 way	MCCB	6+6+6	DEVTL00654	33355
8 way	MCCB	8+8+8	DEVTL00854	36110

* Suitable for 3 Pole & 4 Pole DU100H, DU100D, DU125D, DU125H & DNO MCCB as incomer

For ordering old DBs, replace Cat no with "DB" instead of "DE".

Eg. - New DB Cat no for SPN 12W DD - DESPN012DDS, Old DB Cat no for same will be DBSPN012DDS. Old DBs are available till stock last.



New Vertical TPN DB with MCCB Incomer [8537]

Up to 250A MCCB Incomer



Description	No. of Modules		Cat. Nos.	M.R.P. (₹) Per Unit
	Incomer*	Outgoing		
IP 43 - Metal Door				
4 way	MCCB	4+4+4	DEVTH004DD	18180
6 way	MCCB	6+6+6	DEVTH006DD	20360
8 way	MCCB	8+8+8	DEVTH008DD	22390
12 way	MCCB	12+12+12	DEVTH012DD	27350
16 way	MCCB	16+16+16	DEVTH016DD	36420
IP 54 - Metal Door				
4 way	MCCB	4+4+4	DEVTH00454	33570
6 way	MCCB	6+6+6	DEVTH00654	36655
8 way	MCCB	8+8+8	DEVTH00854	37910

* Suitable for 3 pole and 4 pole DU250, DU250C & DN1 MCCB as incomer

New Enclosure [8537]

Highlights

- › Conforms to IS 8623-1 & 3, IEC 61439-1 & 3
- › Suitable for Surface and Flush mounting
- › Available in CRCA sheet steel, RAL9003, powder coated
- › With provision to mount MCB/Isolator/RCCB/RCBO and other modular devices



IP 30 - Metal Door

Description	No. of Modules	Cat. Nos.	M.R.P. (₹) Per Unit
IP 30 - Metal Door			
2 way	2	DEENC002SD	775
3 way	3	DEENC003SD	775
4 way	4	DEENC004SD	775
6 way	6	DEENC006SD	1180

New Plug & Socket DB [8537]

Highlights

- › Conforms to IS 8623-1 & 3, IEC 61439-1 & 3
- › Suitable for Surface and Flush mounting
- › Available in CRCA sheet steel, RAL9003, powder coated
- › Loose Metal Plugs & Sockets conforms to IS 8804; available in Single Phase & Three Phase



Metal Plug & Socket



Plastic Plug & Socket

Description	No. of Pins	No. of Modules	Cat. Nos.	M.R.P. (₹) Per Unit
Metal Plug & Sockets				
10 A, 2 Pin + SC ^A	P + N	1	DEMPS110SD	1925
20 A, 2 Pin + SC ^A	P + N	1	DEMPS120SD	2070
20 A, 2 Pin + SC ^A	P + N	2	DEMPS220SD	2245
20 A, 3 Pin + SC ^A	3P	3	DEMPS320SD	3805
32 A, 3 Pin + SC ^A	3P	3	DEMPS332SD	4500
32 A, 3 Pin + SC ^A	3P	4	DEMPS432SD	4790
63 A, 5 Pin + SC ^A	3P+N+E	4	DEMPS463SD	16225
Plastic Plug & Sockets				
16 A, 3 Pin	P+N+E	2	DEPPS316SD	3150
32 A, 3 Pin	P+N+E	4	DEPPS332SD	3400
32 A, 5 Pin	3P+N+E	8	DEPPS532SD	5680
63 A, 5 Pin	3P+N+E	8	DEPPS563SD	14220

Metal Plug [8536]



Description	No. of Pins	Cat. Nos.	M.R.P. (₹) Per Unit
10 A, 2 Pin + SC ^A	P + N	MPS210P	185
20 A, 2 Pin + SC ^A	P + N	MPS220P	195
20 A, 3 Pin + SC ^A	3P	MPS320P	255
32 A, 3 Pin + SC ^A	3P	MPS332P	490

Note: Standard pack quantity - 20 nos.

Metal Socket [8536]



Description	No. of Pins	Cat. Nos.	M.R.P. (₹) Per Unit
10 A, 2 Pin + SC ^A	P + N	MPS210S	190
20 A, 2 Pin + SC ^A	P + N	MPS220S	210
20 A, 3 Pin + SC ^A	3P	MPS320S	290
32 A, 3 Pin + SC ^A	3P	MPS332S	490

^A SC-Scraping Earth

Note: Standard pack quantity - 20 nos.



New Dbs with provision for TV / Telephone splitters [8537]



Highlights

- › Distribution Boards equipped with provisions to mount TV / Telephone splitters
- › Available in SPN & TPN Dbs



Cable End Boxes [8537]

Highlights

- › Available in CRCA sheet steel, RAL9003, powder coated
- › Can be either at the top or bottom of the distribution board

Description	Cat. Nos.	M.R.P. (₹) Per Unit
CEB for SPN DBs		
CEB-SPN Double Door, 4 way	DESPN004CBS	845
CEB-SPN Double Door, 6 way	DESPN006CBS	905
CEB-SPN Double Door, 8 way	DESPN008CBS	1015
CEB-SPN Double Door, 12 way	DESPN012CBS	1130
CEB-SPN Double Door, 16 way	DESPN016CBS	1590
CEB-SPN Double Door, 18 way	DESPN018CBS	1645
CEB for TPN DBs		
CEB-TPE Double Door, 4 way	DETPE004CBS	1090
CEB-TPE Double Door, 6 way	DETPE006CBS	1550
CEB-TPN Double Door, 4 way	DETPN004CBS	1140
CEB-TPN Double Door, 6 way	DETPN006CBS	1600
CEB-TPN Double Door, 8 way	DETPN008CBS	2015
CEB-TPN Double Door, 12 way	DETPN012CBS	3345
CEB-TPN Double Door, 16 way	DETPN016CBS	3375
CEB for Horizontal PPI DBs		
CEB-Horz. PPI Double Door, 4 way	DEHPI004CB	1690
CEB-Horz. PPI Double Door, 6 way	DEHPI006CB	2105
CEB-Horz. PPI Double Door, 8 way	DEHPI008CB	2645
CEB-Horz. PPI Double Door, 12 way	DEHPI012CB	3315
CEB-Horz. PPI Double Door, 16 way	DEHPI016CB	3605
CEB for VTPN DBs		
CEB-VTPN Double Door, Modular Incomer	DEVTMXXXCB	1130
CEB-VTPN Double Door, MCCB Incomer	DEVTXXXCB	3985
CEB for Phase Segregated DBs		
CEB-PSG Double Door, 4 way	DEPSG004CB	2955
CEB-PSG Double Door, 6 way	DEPSG006CB	3525
CEB-PSG Double Door, 8 way	DEPSG008CB	3895
CEB-PSG Double Door, 12 way	DEPSG012CB	4335

DB Type	Description	No. of Modules		Cat. Nos.	M.R.P. (₹) Per Unit
		Incomer + Outgoing			
IP 43 - Metal Door					
SPN	6 way	2	4	DESPN006DDTV	4295
	8 way	2	6	DESPN008DDTV	4615
	12 way	2	10	DESPN012DDTV	5680
	16 way	2	14	DESPN016DDTV	6585
	18 way	2	16	DESPN018DDTV	7790
TPN	4 way	8	4+4+4	DETPN004DDTV	8440
	6 way	8	6+6+6	DETPN006DDTV	9745
	8 way	8	8+8+8	DETPN008DDTV	11620

DB Accessories

Busbar - Fork Type [8538]



Highlights

- › Available in Single Pole, Double Pole, Three Pole and Four Pole versions
- › Material : Copper

Description	Cat. Nos..	M.R.P. (₹) Per Unit	Std. Pack Qty.
SP 13 Mod	BSP13	375	5
SP 56 Mod	BSP56	1540	5
DP 12 Mod	BDP12	670	5
TP 12 Mod	BTP12	720	5
FP 12 Mod	BFP12	1430	5
End Caps for SP	ECP01	25	10
End Caps for DP/TP	ECP03	50	10
End Caps for FP	ECP04	85	10



Blanking Plates [8538]

Highlights

- › Available in One module and Half module

Description	Cat. Nos.	M.R.P. (₹) Per Unit	Std. Pack Qty.
One Module	BKP10	25	10
Half Module	BKP05	25	10



PKD02

Padlock [8301]

Highlights

- › Version with standard lock and a common key

Description	Cat. Nos.	M.R.P. (₹) Per Unit	Std. Pack Qty.
Lock and Key Kit	PKD02	655	5



Plugs



Highlights

- › Conforms to IEC 60309 -1&2
- › Mechanical Impact - IK08
- › Ingress Protection - IP44 & IP67
- › Fire Resistance - 850°C as per IEC 60695-2-11
- › Easy Screw connection with same orientation of clamp screws

Description	Cat NO	M.R.P. (₹) Per Unit
Plug - IP44		
16A, 2P+E	PSKPM30164	590
32A, 2P+E	PSKPM30324	930
16A, 3P+E	PSKPM40164	745
32A, 3P+E	PSKPM40324	1080
16A, 3P+N+E	PSKPM50164	780
32A, 3P+N+E	PSKPM50324	1065
Plug - IP67		
16A, 2P + E	PSKPM30167	1290
32A, 2P + E	PSKPM30327	1825
63A, 2P + E	PSKPM30637	5175
16A, 3P + E	PSKPM40167	1455
32A, 3P + E	PSKPM40327	2305
63A, 3P + E	PSKPM40637	4930
16A, 3P + N + F	PSKPM50167	1560
32A, 3P + N + E	PSKPM50327	1985
63A, 3P + N + E	PSKPM50637	4940
125A, 3P + N + E	PSKPM51257	15085

Socket Angled



Highlights

- › Conforms to IEC 60309 -1&2
- › Mechanical Impact - IK08
- › Ingress Protection - IP44 & IP67
- › Fire Resistance - 850°C as per IEC 60695-2-11
- › Easy Screw connection with same orientation of clamp screws

Description	Cat NO	M.R.P. (₹) Per Unit
Socket Angled - IP44		
16A, 2P+E	PSKSA30164	635
32A, 2P+E	PSKSA30324	1125
16A, 3P+E	PSKSA40164	945
32A, 3P+E	PSKSA40324	1305
16A, 3P+N+E	PSKSA50164	1005
32A, 3P+N+E	PSKSA50324	1300
Socket Angled - IP67		
16A, 2P+E	PSKSA30167	1190
32A, 2P+E	PSKSA30327	1550
63A, 2P+E	PSKSA30637	5085
32A, 3P+E	PSKSA40327	2305
63A, 3P+E	PSKSA40637	5095
32A, 3P+N+E	PSKSA50327	1840
63A, 3P+N+E	PSKSA50637	5195
125A, 3P+N+E	PSKSA51257	17245

Socket



Highlights

- › Conforms to IEC 60309 -1&2
- › Mechanical Impact - IK08
- › Ingress Protection - IP44 & IP67
- › Fire Resistance - 850°C as per IEC 60695-2-11
- › Easy Screw connection with same orientation of clamp screws

Description	Cat NO	M.R.P. (₹) Per Unit
Socket - IP44		
16A, 2P+E	PSKSM30164	820
32A, 2P+E	PSKSM30324	1125
16A, 3P+E	PSKSM40164	945
16A, 3P + N + E	PSKSM50164	1030
32A, 3P + N + E	PSKSM50324	1375
Socket - IP67		
16A, 2P+E	PSKSM30167	1515
32A, 2P+E	PSKSM30327	2080
63A, 2P+E	PSKSM30637	5635
16A, 3P+E	PSKSM40167	1900
63A, 3P+E	PSKSM40637	5685
16A, 3P + N + E	PSKSM50167	1985
32A, 3P + N + E	PSKSM50327	2325
63A, 3P + N + E	PSKSM50637	5775
125A, 3P + N + E	PSKSM51257	18135

Socket Straight



Highlights

- › Conforms to IEC 60309 -1&2
- › Mechanical Impact - IK08
- › Ingress Protection - IP44 & IP67
- › Fire Resistance - 850°C as per IEC 60695-2-11
- › Easy Screw connection with same orientation of clamp screws

Description	Cat NO	M.R.P. (₹) Per Unit
Socket Straight- IP44		
16A, 2P+E	PSKSS30164	715
32A, 2P+E	PSKSS30324	1135
32A, 3P+N+E	PSKSS50324	1420
Socket Straight- IP67		
16A, 2P+E	PSKSS30167	1200
63A, 2P+E	PSKSS30637	6155
63A, 3P+E	PSKSS40637	5145
63A, 3P+N+E	PSKSS50637	5145
125A, 3P+N+E	PSKSS51257	17245

General Terms

All prices are on Maximum retail price basis inclusive of all duties, GST & any other tax as applicable.

Warranty Policy

All products listed in the price list are covered by a warranty against manufacturing defects for a period of 18+ months from the date of purchase. For Lauritz Knudsen MCBs & Isolators mounted inside Lauritz Knudsen Distribution Boards, an extended warranty of 5 years is provided.

In the event of a defect due to faulty workmanship or other associated reasons, we will, at our discretion, remedy the defect or replace the faulty parts or the entire product as soon as possible, free of cost.

However, the warranty is subject to proper usage, efficient maintenance, and does not cover defects arising from fire, accidents, inefficient maintenance, faulty operation, or deliberate or accidental damage. It also does not cover damage to power electronic components such as thyristors & IGBTs, which primarily fail due to overtemperature & over-voltage. Users need to take adequate precautions to eliminate these conditions. Manufacturer shall not be responsible & liable for any special, incidental, social or consequential (including lost profits) loss, consequential damages, injury or damages (punitive) of any kind solely attributable to defect or failure of its products. Manufacturer shall not be liable in any manner for the issue of or failure in the performance of other equipment the product is attached to.

Note: We are committed to maintaining our product warranty in line with our standard terms for both the Lauritz Knudsen Brand and the L&T Switchgear brand. The change in brand will not alter our standard warranty terms or any applicable extended warranty terms.

Furthermore, we will ensure that spares and after-sales support remain available throughout the entire product life cycle, regardless of whether the products are under the L&T Switchgear brand or the Lauritz Knudsen Brand

Comprehensive Service Support

Lauritz Knudsen Electrical & Automation has over seven decades of experience in providing after sales service for low voltage distribution system in every type of industry & commercial complex in India

Lauritz Knudsen Electrical & Automation offers the following services, partnering you in your maintenance of low voltage distribution products:

- › Regular Maintenance
- › Preventive Maintenance Programme
- › On Call
- › Annual Maintenance Contract
- › Product Support for Managing Obsolescence-

Switchgear Training Centres



Pune

Lauritz Knudsen Electrical & Automation
Switchgear Training Centre
T-156 / 157, MIDC,
Bhosari, Pune - 411 026
Tel: 020-2712 0037 / 2712 0653
E-mail: STC-PUNE@LK-EA.com



Lucknow

Lauritz Knudsen Electrical & Automation
Switchgear Training Centre
C-6 & 7, UPSIDC,
P. O. Sarojininagar,
Lucknow - 226 008
Tel: 97944 54455
E-mail: STC-LUCKNOW@LK-EA.com



Delhi

Lauritz Knudsen Electrical & Automation
Switchgear Training Centre
A-25, Imperia Complex, First Floor
Mohan Cooperative Industrial Estate
Near Sarita Vihar / Mohan Estate Metro Station
Main Mathura Road, New Delhi - 110044
Tel: 9899020306 / 9720186726 / 9560845094
E-mail: STC-DELHI@LK-EA.com



Kolkata

Lauritz Knudsen Electrical & Automation
Switchgear Training Centre,
2nd Floor, Block BN3, Sector V,
Salt Lake City,
Kolkata - 700091, West Bengal
Tel: 7738717893 / 7797795567
E-mail: STC-KOLKATA@LK-EA.com



Vadodara

Lauritz Knudsen Electrical & Automation
Switchgear Training Centre
Behind L&T Knowledge City,
Near Village Ankhol,
Vadodara - 390019
Tel: 0265 6147805 / 6147808
E-mail: STC-VADODARA@LK-EA.com



Coonor

Lauritz Knudsen Electrical & Automation
Switchgear Training Centre
Ooty-Coonor Main Road
Yellanahalli P.O.,
The Nilgiris - 643 243
Tel: 0423 251 7107
E-mail: STC-COONOOR@LK-EA.com

Customer Interaction Center (CIC)
Phone no: 022 6932 7800
Web: www.LK-EA.com | e-mail: CIC@LK-EA.com



General Terms

All prices are on Maximum retail price basis inclusive of all duties, GST & any other tax as applicable.

Warranty Policy

All products listed in the price list are covered by a warranty against manufacturing defects for a period of 18+ months from the date of purchase. For Lauritz Knudsen MCBs & Isolators mounted inside Lauritz Knudsen Distribution Boards, an extended warranty of 5 years is provided.

In the event of a defect due to faulty workmanship or other associated reasons, we will, at our discretion, remedy the defect or replace the faulty parts or the entire product as soon as possible, free of cost.

However, the warranty is subject to proper usage, efficient maintenance, and does not cover defects arising from fire, accidents, inefficient maintenance, faulty operation, or deliberate or accidental damage. It also does not cover damage to power electronic components such as thyristors & IGBTs, which primarily fail due to overtemperature & over-voltage. Users need to take adequate precautions to eliminate these conditions. Manufacturer shall not be responsible & liable for any special, incidental, social or consequential (including lost profits) loss, consequential damages, injury or damages (punitive) of any kind solely attributable to defect or failure of its products. Manufacturer shall not be liable in any manner for the issue of or failure in the performance of other equipment the product is attached to.

Note: We are committed to maintaining our product warranty in line with our standard terms for both the Lauritz Knudsen Brand and the L&T Switchgear brand. The change in brand will not alter our standard warranty terms or any applicable extended warranty terms.

Furthermore, we will ensure that spares and after-sales support remain available throughout the entire product life cycle, regardless of whether the products are under the L&T Switchgear brand or the Lauritz Knudsen Brand

Comprehensive Service Support

Lauritz Knudsen Electrical & Automation has over seven decades of experience in providing after sales service for low voltage distribution system in every type of industry & commercial complex in India

Lauritz Knudsen Electrical & Automation offers the following services, partnering you in your maintenance of low voltage distribution products:

- › Regular Maintenance
- › Preventive Maintenance Programme
- › On Call
- › Annual Maintenance Contract
- › Product Support for Managing Obsolescence-

Electrical Standard Products (ESP) Offices

HEAD OFFICE

Lauritz Knudsen Electrical & Automation, A/600, Shil-Mahape Road, TTC Industrial Area, MIDC Thane, Navi Mumbai, 400 710, Maharashtra.
Tel: 022-6722 6300 | Fax: 022-6705 1112 | e-mail: CIC@LK-EA.com

BRANCH OFFICES

Lauritz Knudsen Electrical & Automation
C-201, The First Commercial Complex,
B/S Keshavbaug Party Plot, Vastrapur,
Ahmedabad - 380 015
Phone No: 022-6932 7800
e-mail: CIC@LK-EA.com

Lauritz Knudsen Electrical & Automation
Ground Floor, B-27, Biplab Rashbihari Sarani,
Sector 2A, Bidhan Nagar,
Durgapur - 713 212
Phone No: 022-6932 7800
e-mail: CIC@LK-EA.com

Lauritz Knudsen Electrical & Automation
Business Communication Centre
2nd Floor, Chiramel Chambers,
Kurisupally Road, Ravipuram,
Kochi - 682 015
Phone No: 022-6932 7800
e-mail: CIC@LK-EA.com

Lauritz Knudsen Electrical & Automation
A-25, 1st Floor, Imperia Complex,
Mohar Corporate Industrial Estate,
Near Sarita Vihar Metro Station,
Mathura Road,
New Delhi - 110 044
Phone no: 022-6932 7800
e-mail: CIC@LK-EA.com

Lauritz Knudsen Electrical & Automation
Wework Central, #36 Infantry Road,
Bengaluru - 560 001
Phone No: 022-6932 7800
e-mail: CIC@LK-EA.com

Lauritz Knudsen Electrical & Automation
6th Floor, Exotica Greens, A Block, 191,
R G Baruah Road, Guwahati Central,
Guwahati - 781 005
Phone No: 022-6932 7800
e-mail: CIC@LK-EA.com

Lauritz Knudsen Electrical & Automation
2nd Floor, BN3, Salt Lake, Sector-V,
Kolkata - 700 091
Phone No: 022-6932 7800
e-mail: CIC@LK-EA.com

Lauritz Knudsen Electrical & Automation
A06/A07, Second Floor,
Grand Chandra Complex, Frazer Road
Patna - 800 001
Phone No: 022-6932 7800
e-mail: CIC@LK-EA.com

Lauritz Knudsen Electrical & Automation
Under O Launchpad, 4th Floor,
Unit-434, Esplanade 1, Rasulgarh,
Bhubaneswar - 751 010
Phone No: 022-6932 7800
e-mail: CIC@LK-EA.com

Lauritz Knudsen Electrical & Automation
Shri Daneshwari, 1st Floor,
Plot No. 17, 2nd Cross, Near Old Income
Tax Office Road, Vidyanagar,
Hubballi - 580 021
Phone No: 022-6932 7800
e-mail: CIC@LK-EA.com

Lauritz Knudsen Electrical & Automation
No.10, Fortuna Towers, 2nd Floor,
Rana Pratap Marg, Near NBRI
Lucknow - 226 001
Phone No: 022-6932 7800
e-mail: CIC@LK-EA.com

Lauritz Knudsen Electrical & Automation
UrbanWrk, 5th Floor, Sai Radhe,
Raja Bahadur Mill Road, Behind Hotel
Grand Sheraton, Sangamwadi
Pune - 411 001
Phone No: 022-6932 7800
e-mail: CIC@LK-EA.com

Lauritz Knudsen Electrical & Automation
4th Floor, SCO-54, 55, 56, Sector-17A
Chandigarh - 160 017
Phone No: 022-6932 7800
e-mail: CIC@LK-EA.com

Lauritz Knudsen Electrical & Automation
AWFIS Space Solutions, Prestige Phoenix,
4th floor, 1405, Umanagar, Begumpet,
Hyderabad - 500 016
Phone No: 022-6932 7800
e-mail: CIC@LK-EA.com

Lauritz Knudsen Electrical & Automation
El Dorado Building, 3rd Floor, 6,
Venkatraman Street, Chinna Chokkikulam
Madurai - 625 002
Phone No: 022-6932 7800
e-mail: CIC@LK-EA.com

Lauritz Knudsen Electrical & Automation
Office No. 211 & 212, Pithalia Plaza,
KK Road, Near Fafadih Chowk,
Raipur - 492 001, Chhattisgarh,
Phone No: 022-6932 7800
e-mail: CIC@LK-EA.com

Lauritz Knudsen Electrical & Automation,
801 Word Level-8, No. 28,
SIDCO Industrial Estate, Guindy,
Chennai - 600 032, Tamil Nadu,
Phone No: 022-6932 7800
e-mail: CIC@LK-EA.com

Lauritz Knudsen Electrical & Automation
Workie, 214 - 2nd Floor,
Apollo Premier, PU-4,
Scheme No. 54, Vijay Nagar Square,
Indore - 452 010
Phone No: 022-6932 7800
e-mail: CIC@LK-EA.com

Lauritz Knudsen Electrical & Automation
TC II, Tower B, PRIMA BAY Gate No. 5,
Saki Vihar Road Powai,
Mumbai - 400 072
Phone No: 022-6932 7800
e-mail: CIC@LK-EA.com

Lauritz Knudsen Electrical & Automation
10th Floor, Titaanium Business,
Bhimrad Road, Althan
Surat - 395 017
Phone No: 022-6932 7800
e-mail: CIC@LK-EA.com

Lauritz Knudsen Electrical & Automation
Playworkz Coworking Space
43 & 44, 3rd Cross,
Bharathy Colony, Peelamedu,
Coimbatore - 641 004
Phone No: 022-6932 7800
e-mail: CIC@LK-EA.com

Lauritz Knudsen Electrical & Automation
Office No. 430, 4th Floor,
Jaipur Electronic Market, Riddhi Siddhi,
Gopalpura Bypass,
Jaipur - 302 018
Phone No: 022-6932 7800
e-mail: CIC@LK-EA.com

Lauritz Knudsen Electrical & Automation
Unnati Building, 2nd Floor,
Automation Campus, A-600, TTC Industrial
Area Shil-Mahape Road, Mahape
Navi Mumbai - 400 710
Phone No: 022-6932 7800
e-mail: CIC@LK-EA.com

Lauritz Knudsen Electrical & Automation
11th Floor, Block-D, Notus IT Park,
Sarabhai Campus, Bhailal Amin Marg,
Vadodara - 390 023
Phone No: 022-6932 7800
e-mail: CIC@LK-EA.com

Lauritz Knudsen Electrical & Automation
3rd Floor, 1&2 Vijay Park,
Main Chakrata Road, Opp. Anandam,
Near Ballapur chowk,
Dehradun - 248 001
Phone No: 022-6932 7800
e-mail: CIC@LK-EA.com

Lauritz Knudsen Electrical & Automation
GDR Siddha, Ground Floor, N Road
Bistupur, Opposite St. Mary's Church,
Jamshedpur - 831 001
Phone No: 022-6932 7800
e-mail: CIC@LK-EA.com

Lauritz Knudsen Electrical & Automation
M1 & M2, Mezzanine Floor,
Himalaya Excellency,
Plot No. C-47, Pratap Nagar Square,
Nagpur - 440 022
Phone No: 022-6932 7800
e-mail: CIC@LK-EA.com

Lauritz Knudsen Electrical & Automation
Naga Chambers, 3rd Floor, D/No. 12-1-16,
Plot No. 49, Survey No. 1051, Waltair Main Road,
Visakhapatnam - 530 002, Andhra Pradesh,
Phone No: 022-6932 7800
e-mail: CIC@LK-EA.com

Product improvement is a continuous process. For the latest information and special application, please contact any of our offices listed here. Product photographs shown for representative purpose only.



Lauritz Knudsen Electrical & Automation, Electrical Standard Product
A/600, Shil-Mahape Road, TTC Industrial Area, MIDC Thane, Navi Mumbai, 400 710,
Maharashtra, Phone No: 022-6722 6300 | Web: www.LK-EA.com

Customer Interaction Center (CIC)
Phone no: 022-6932 7800
Web: www.LK-EA.com | e-mail: CIC@LK-EA.com