



SPENCIL KIOSK

ASSEMBLY INSTRUCTIONS

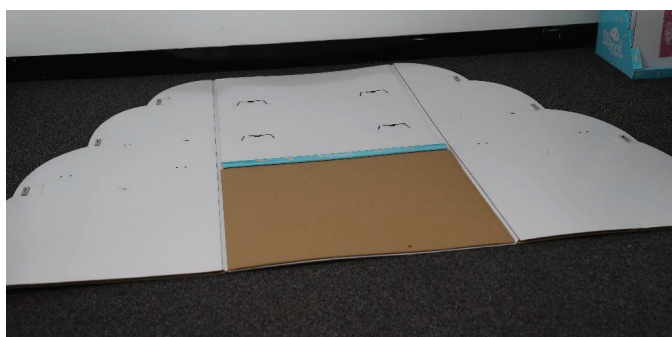


The Spencil Kiosk Display Unit is the new and improved display which gives you complete flexibility in merchandising the right Spencil product for the right sales season.

With four shelves and removable custom trays for water bottles and other small items that can be mixed and matched in a variety of combinations, you can also remove the top shelf and have your Book Cover Display Unit at the top. There are two hooks on each side to highlight your hang-sell items to maximise your promotion space and price strips to encourage immediate purchase decisions.

The Spencil Kiosk can be placed front and centre as a feature position with pointers to your bulk stock or place it within the Spencil area for additional stock shelving and display.

In around ten minutes you can have your light-weight kiosk ready for fill. It is designed as a stand-alone end or for wall placement or put two units back-to-back for walk-around floor positioning.



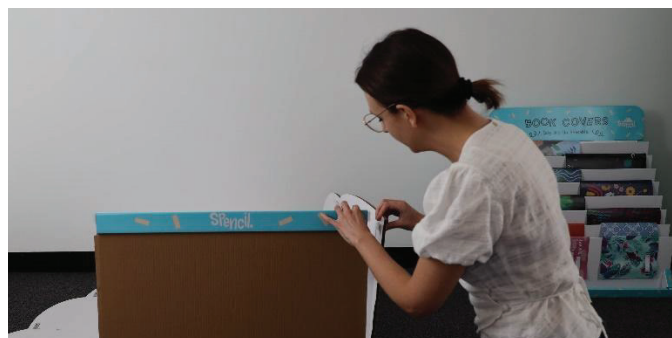
1: Start with the largest piece laid out on the floor.



2: Slide plastic joiners onto each of the eight slots on the outer curved edges (flip the cardboard flap out to place the joiners in and fold it back over to secure).



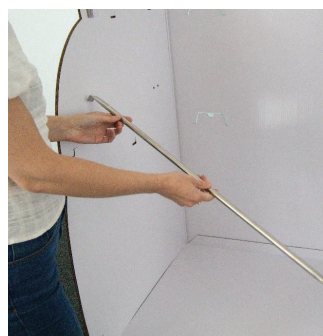
3: Fold the bottom centre brown card flap out and fold in blue facing strip.



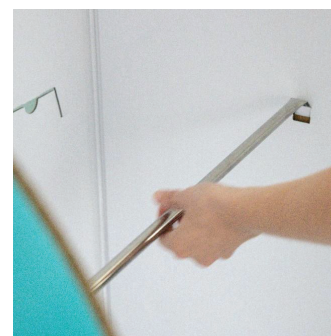
4.1: Connect the side panels to the base by slotting the plastic pin into the joiner on each side.



4.2: Connect the side panels to the base by slotting the plastic pin into the joiner on each side.

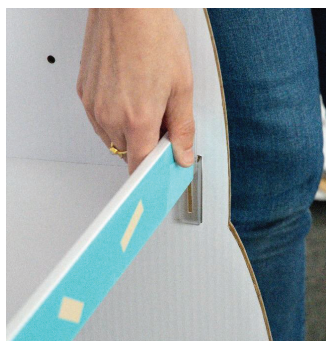


5: Turn it upright and add a metal rod to create a sturdy base for the bottom shelf.





6: Add bottom shelf – be sure to slide the back of the shelf into the indents on the kiosk backboard and connect the front by sliding shelf into side plastic joiners



7: Repeat the above for the middle shelf, adding the metal rod first and then sliding the shelf over the back tabs and then into the front plastic joiners.



8 & 9: Repeat on top shelf (no metal rod). Add header card to the top of the kiosk inserting tabs into place.



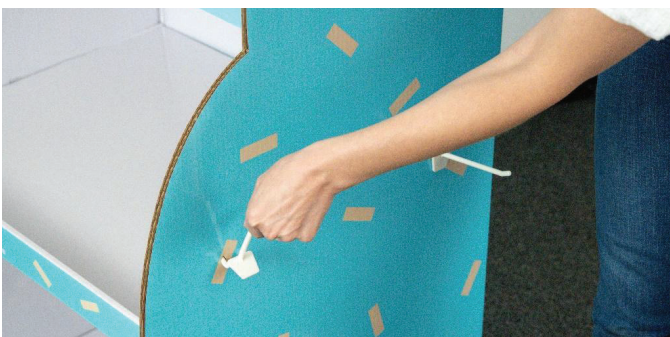
10: Construct the inner display boxes (these can be mixed and matched on any of the lower shelves depending on your stock!) Inner trays: Fold in all the sides first and then slide in the long card to form the base. Fold down the back piece to lock it all in place.



11.1: Water bottle holder: Fold all sides in so the white is on the outer.



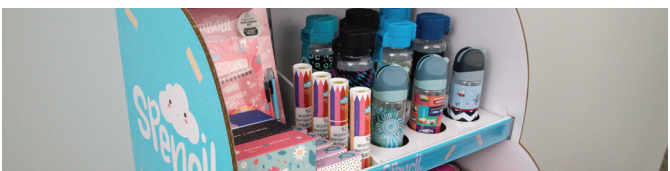
11.2: Water bottle holder: Fold all sides in so the white is on the outer.



12: Insert each of the four plastic hooks into the holes on both sides of the kiosk



13: Peel the brown paper off the pricing strip to fix to the front of each shelf



Have fun merchandising your Spencil stock!

Tip! Take out the top shelf and place your Spencil book cover stand on top of the second shelf to display your book cover selection for Back to School!