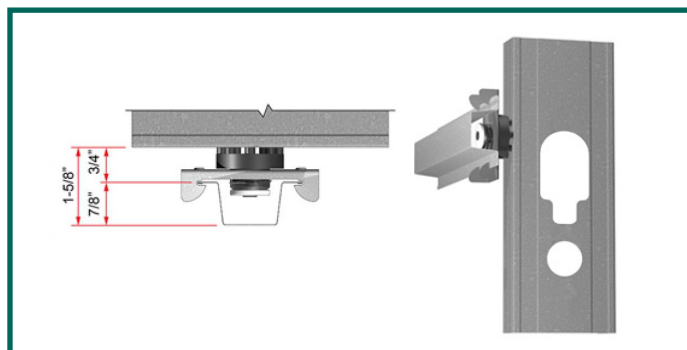


Bailey CD Sound Clip™



Bailey CD Sound Clip™ Installation

Used to fasten gypsum wallboard in various wall and floor-ceiling applications, while simultaneously providing acoustical separation.

The Bailey CD Sound Clip (CDSC) is used in conjunction with 18mil (25ga) 7/8" deep drywall furring channel. It is used to fasten gypsum wallboard in various wall and floor-ceiling applications, while simultaneously providing acoustical separation. This significantly reduces the amount of airborne sound filtering from room to room. The CDSC increases the STC ratings in most assemblies while reducing sound transfer.

- Ideal for use in multi-family dwelling, hotels, theaters and hospitals
- Used in conjunction with 7/8" 25 ga Furring Channel with a total standoff from stud of 1-5/8"
- UL fire rated for most common assemblies
- Complies to UL 263 test standards. See full list of UL® design assemblies in UL R19331
- Maximum spacing 48" o.c. (laterally) x 24" o.c. (vertically)
- Maximum acoustical design load is 36 lbs.
- SOUND TESTING FOR TYPE X & TYPE C BOARDS

PRODUCT DATA & ORDERING INFORMATION

Product code	Dimensions	Thickness	Yield Strength	Coating	Pcs./Ctn.
CLIP-CDSC	3" x 1-1/4" (Clip only)	43mil (18ga)	33ksi	G60	100

For STC, IIC values, and test reports, please follow the link below:

STC, IIC values, and test reports for Bailey CD Sound Clip can be found on our website at www.bmp-group.com

Installation Guide

FURRING CHANNEL:

7/8" 25-gauge hemmed furring channel (7/8" fur, 1-1/4" top & 2-23/32" bottom)

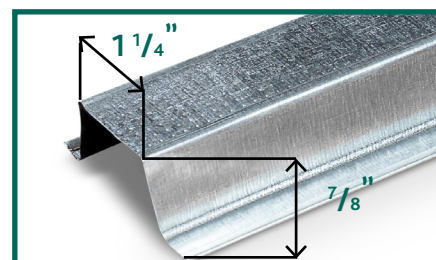
- When splicing, drywall furring channel should have 6 inch overlap in mid span (between two clips) secure with 18-gauge tie wire, or two 7/16" framing screws. If using in a fire rated/UL application; use only tie wire and no screws.

BAILEY CD SOUND CLIP™:

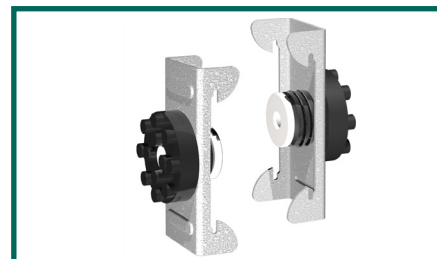
3" x 1-1/4" (clip only) maximum spacing 48" o.c. and maximum acoustical design load is 36 lbs.

FASTENERS:

- CDSC to Wood: 64mm (2-1/2") # 8 minimum size coarse thread screw. (Recommended #12 or #10 x 2-1/2" hex head)
- CDSC to Steel: 38 mm (1-1/2") # 8 minimum size fine thread screw. (Recommended #12 or #10 x 1-5/8" hex head)
- DO NOT attach CDSC to framing members with nails; use only approved screws.



Furring Channel / Hat Channel



Bailey CD Sound Clip™

WALLS: ONE AND TWO LAYERS OF 5/8" GYPSUM BOARD

- Bailey CD Sound Clip™ (CDSC) shall be 48" maximum o.c. (horizontal).
- Fasten the CDSC to the substrate with a fastener approved for a minimum pull-out and shear of 120lbs.
- Locate the first row of CDSC within 3-6 inches from the floor and within 3-6 inches from the top track, making sure the clip is attached to the studs and not the track.
- Snap in the drywall furring channel into the CDSC clips (horizontal for walls).
- Place 1/4" (minimum) shim on floor to fully support the gypsum board.
- Install the gypsum board from the bottom up leaving a 1/4" minimum gap around the perimeter of the wall.
- ONLY remove the shims after ALL the gypsum board is completely screwed to ALL the drywall furring channels. Make sure every screw (floor to-ceiling and wall-to-wall) is installed as required by the assembly design, in every layer of gypsum board before removing the shims at the floor. The shims are critical to ensure best results.
- Caulk around the entire perimeter of the gypsum board. Use fire and smoke rated acoustical sealant where required.

CEILINGS: ONE AND TWO LAYERS OF 5/8" GYPSUM BOARD

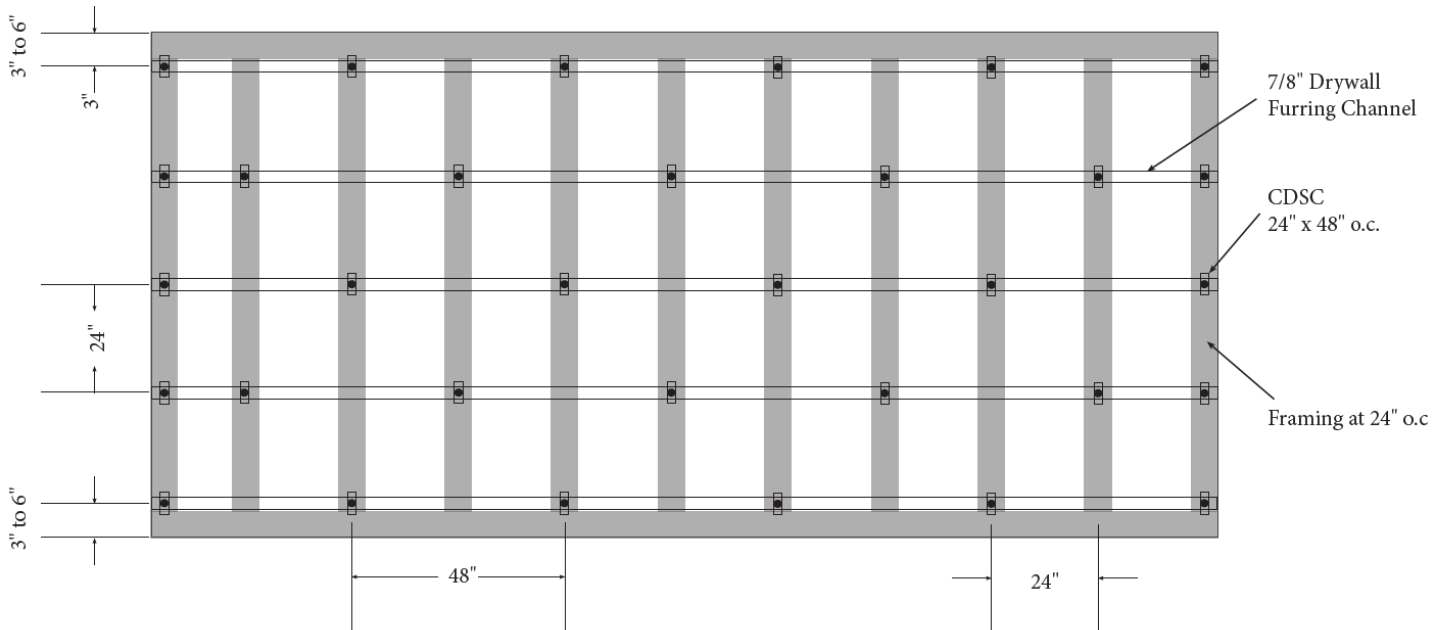
- CDSC shall be 48" maximum o.c.
- Fasten the CDSC to the substrate with a fastener approved for a minimum pull-out and shear of 120lbs.
- Locate the first row CDSC clips within 8" of the wall at each end of a run.
- Snap in the drywall furring channel into the CDSC clips. Channel max spacing at 24" o.c.
- Install the gypsum board from leaving a 1/4" min. gap around the perimeter of the ceiling.
- Caulk around the entire perimeter of the gypsum board. Use fire and smoke rated acoustical sealant where required.

GENERAL INFORMATION:

- Bailey CD Sound Clip™, furring channel and gypsum board shall not carry heavy loads such as cabinets or bookshelves.
- Seal all potential air leaks with non-hardening acoustical caulking to achieve best noise control results. Use fire rated sealant where required.
- Refer to www.UL.com, or www.clarkdietrich.com for complete installation details on all fire resistive assembly designs.

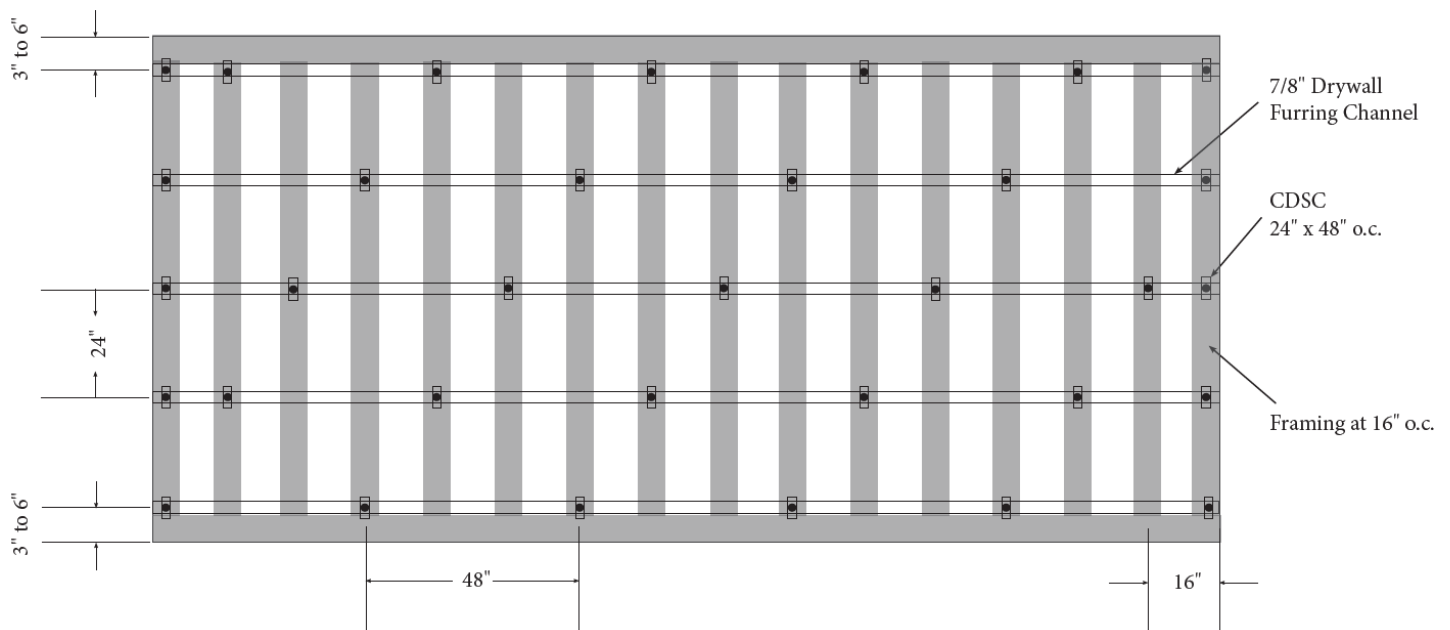
WALL AND CEILING INSTALLATION GUIDE FOR WOOD OR STEEL FRAMING WITH FURRING ON 24" CENTERS

Wall or Ceiling framing at 24" o.c.,
CDSC at 48" o.c., furring at 24" o.c., 1 or 2 layers of 5/8" gypsum board



NOTE: DRAWING NOT TO SCALE

Wall or Ceiling framing at 16" o.c.,
CDSC at 48" o.c., furring at 24" o.c., 1 or 2 layers of 5/8" gypsum board



NOTE: DRAWING NOT TO SCALE